



FIREFLY AUTISM

2024

IMPACT REPORT



TABLE OF CONTENTS

Our Mission	1
A Message from our CEO	2
A Message from our 23-24 Board Chair	3
Firefly Board of Directors	4
Impact of Firefly Autism	5-21
Summary of Financial Performance	22-23
Firefly Events <ul style="list-style-type: none">• Laugh Yourself Blue 2024• Lifetime Golf Classic 2024• 2nd Annual Summer Garden Party• Planned Giving Dinner 2024• Sensory-Friendly Santa Pictures 2024	24-27
Colorado Gives Day 2024	28
A Message from Board Members	29
Thank You to Our Staff	30
Thank You to Our Supporters	31
Firefly Donors	32-36
Ways to Give	37-40
Contact Us	41



OUR MISSION

We are dedicated to celebrating the lives of individuals on the autism spectrum through learning, support, and solutions. We achieve this by building innovative, individualized programs and cultivating meaningful, impactful relationships with individuals, families, and communities we serve.



A MESSAGE FROM FIREFLY'S PRESIDENT & CEO

Dear Firefly Community,

It is an honor to reflect on the impact we have made together over the past year. Guided by our mission to celebrate the lives of individuals on the autism spectrum through learning, support, and solutions, we continue to transform the landscape of behavioral and mental health for individuals of all ages.

From crucial early intervention for our youngest learners to tweens, teens and adults navigating the complexities of independence, Firefly Autism remains one of the few places in Colorado where everyone is welcome and supported. Through innovative and individualized programs, we provide meaningful services tailored to the unique interests, values, and needs of each person we serve. This year alone, we've been lucky enough to impact the lives of more than 300 children, adults and their families across our programs.

None of this would be possible without the generous contributions of our community. Together, we've expanded access to essential services for vulnerable children and families in underserved communities, offered expanded support to caregivers, and provided transformative training for businesses and organizations across Colorado. We also actively partner with technology forward solutions to assist in the advancement of therapeutic interventions and outcomes. These efforts continue to foster our commitment to inclusivity and empowerment for neurodivergent individuals.

As you review this impact report, I encourage you to take pride in the tangible outcomes your support has helped us achieve.



Each milestone reached and challenge addressed reflects the strength of our collaboration. Thank you for your continued partnership in advancing our mission and supporting the individuals and families we serve.

Dr. Amanda Kelly

President & CEO of Firefly Autism

A MESSAGE FROM FIREFLY'S 2023-2024 BOARD CHAIR

Dear Friends and Supporters,

It is with immense pride and gratitude that I introduce the 2024 Impact Report for Firefly Autism. This document encapsulates the heart of our mission: transforming lives by unlocking the potential of children and adults on the Autism Spectrum, while empowering their families to thrive.

Over the past year, Firefly Autism has continued to be a beacon of hope and a catalyst for change. The statistics you'll find within these pages affirm what we witness daily: significant, measurable progress in the lives of the individuals we serve. Children and adults in our care are achieving milestones once thought out of reach, thanks to personalized, evidence-based interventions and the unwavering dedication of our team.

These successes are not ours alone—they are a testament to the collective impact of every family, staff member, donor, volunteer, and advocate who has joined hands with us. Together, we are creating a world where neurodiverse individuals are celebrated for their strengths and supported in their challenges.

As you read this report, I encourage you to reflect on the stories behind the numbers—the triumphs, the resilience, and the partnerships that make Firefly Autism not just a place of learning, but a community of belonging.

Your support fuels this journey, and your belief in our mission ensures that more lives are touched, transformed, and empowered.

On behalf of the entire Firefly Autism community, thank you for standing with us and for your unwavering commitment to the families we serve. The future is bright, and together, we will continue to light the path forward.

With deep gratitude,



Sandra L. Gudat
Chairman of the Board 2023-2024
Firefly Autism



FIREFLY AUTISM 2024 BOARD OF DIRECTORS



Linda Childears,
Board Chair



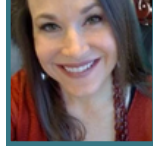
Janette Ferguson,
Board Vice Chair



Jessen Perko,
Board Secretary



Travis Plakke,
Board Treasurer



Sandra Gudat,
Immediate Past
Board Chair



Deb Howitt



Donna Goldin
Evans



Ed Francis



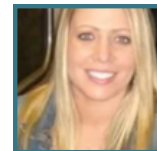
Greg McCarthy



Javier Soto



Jesse Ogas



Jessica Ostoyich



Jim Tolliver



John Griffith



John Morgridge



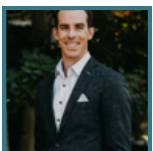
Krystal Than



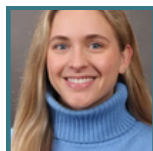
Leigh Sullivan



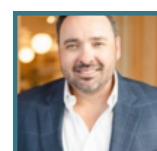
Mark Richtermeyer



Matt Teeters



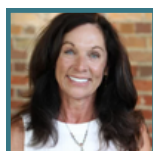
Morgan Wuthrich



Randy Perko



Saurabh Gupta



Suzie Murphy

IMPACT OF FIREFLY AUTISM

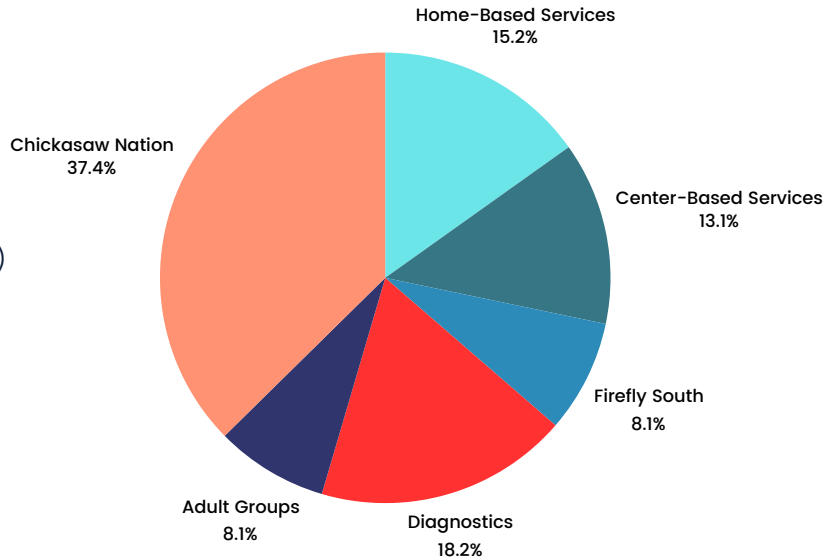


PROGRAM OVERVIEW

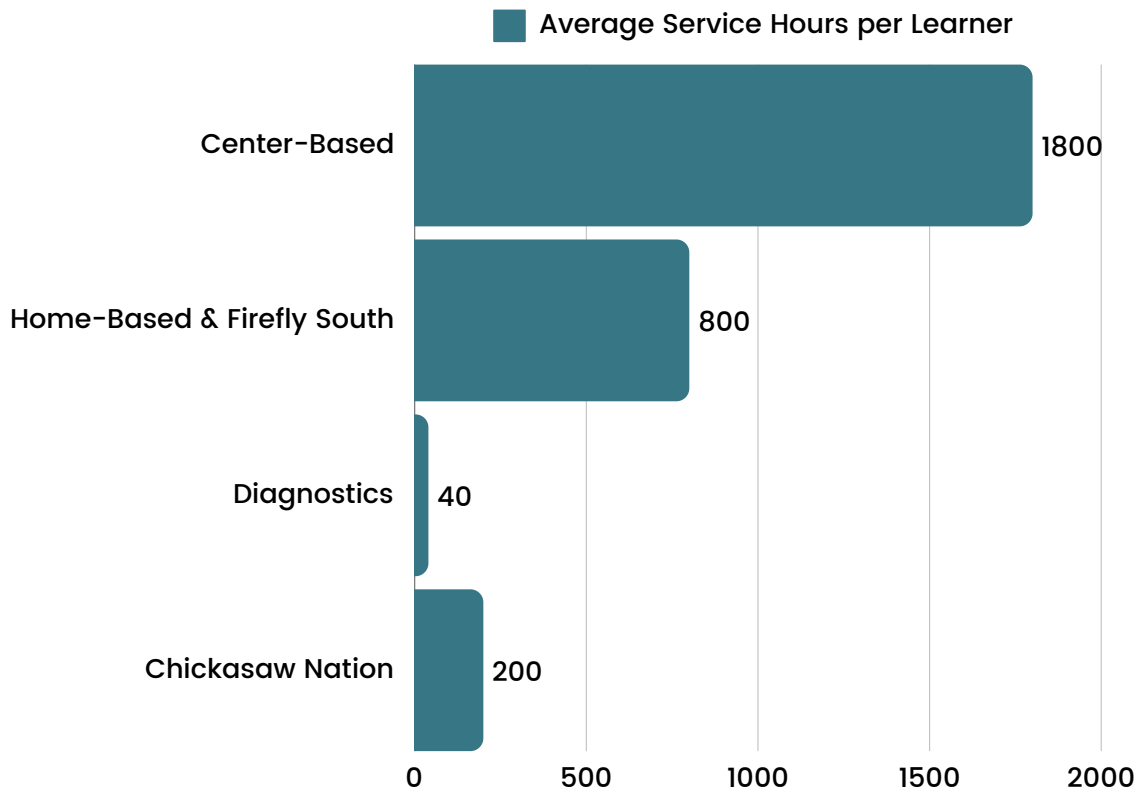
Across the 2024 calendar year, **319** individuals accessed Firefly Autism’s therapeutic services.

Programs:

- Center-Based Services
- Home-Based Services (Outreach)
- Firefly South (Outreach)
- Diagnostics
- Adult Groups (Outreach)
- Chickasaw Nation (Outreach)

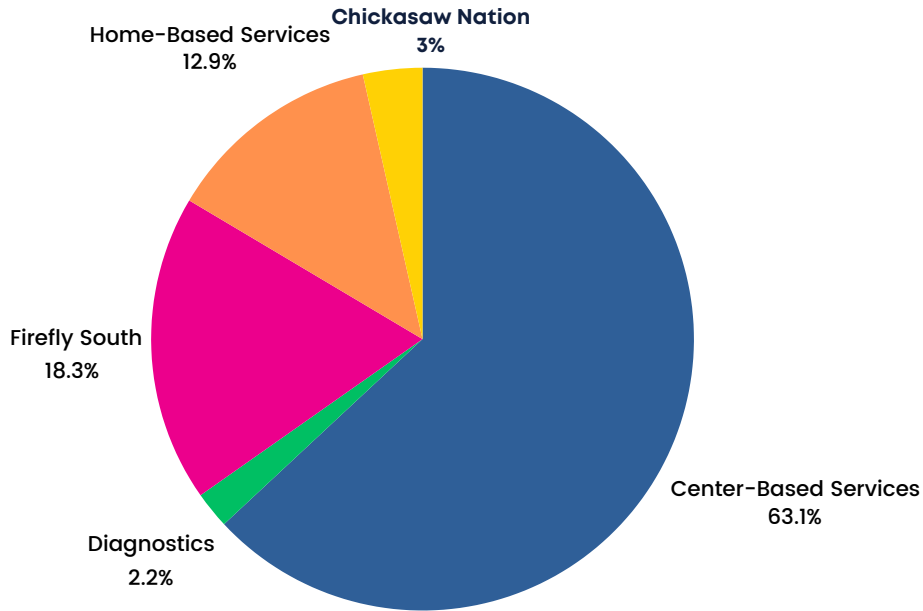


In Colorado, our clinical programs are highly individualized to meet the unique needs of each learner. Some learners require over 1,500 hours of support annually, making up more than 95% of our staff time, expertise, and resources. This reflects our deepest commitment to those who need us most—often with nowhere else to turn.

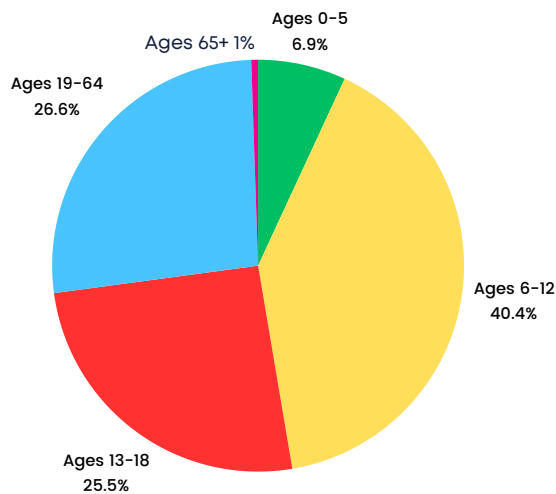
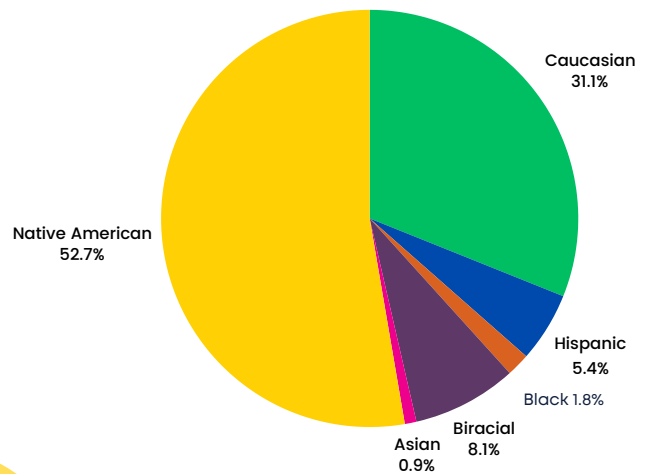
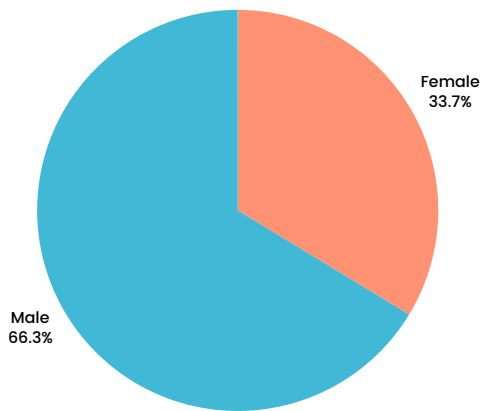


PROGRAM OVERVIEW

The graph below depicts the total **Budget Impact** of each program. This reflects the *resources required* to serve our amazing and unique learners in each program.



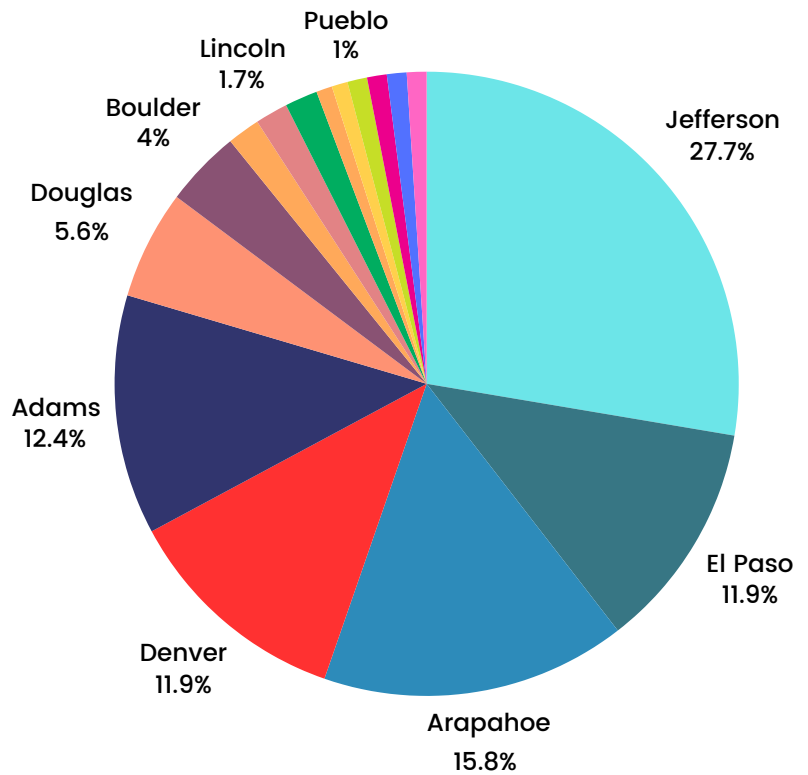
At Firefly, we are so lucky to impact a varied and diverse demographic of individuals. **Demographics** for Firefly learners served are depicted below:



FIREFLY PROUDLY SERVES 16 COUNTIES IN COLORADO

Counties Served

- | | |
|---------------|-------------|
| ■ Adams | ■ Elbert |
| ■ Arapahoe | ■ Gilpin |
| ■ Boulder | ■ Jefferson |
| ■ Broomfield | ■ Lincoln |
| ■ Clear Creek | ■ Park |
| ■ Denver | ■ Pueblo |
| ■ Douglas | ■ Teller |
| ■ El Paso | ■ Weld |



IMPACT OF FIREFLY'S PROGRAMS

Center-Based Services

Firefly's building in Lakewood houses all of the center-based clinical services. In 2024, Firefly served **123** learners in the Lakewood location alone. Our Lakewood center hosts four of our programs: **Early Intervention, School Age, Vocational and Transition**, and is the meeting space for our **Adults groups**.

Of those learners, **100%** made progress on their individualized goals during the year, with all learners making progress in some way across communication, social skills, challenging behavior reduction, and adaptive skills. This represents a remarkable achievement for our learners and is an attestation to the dedication of our staff.

In 2024, Firefly's diagnostic provider also completed **diagnostic evaluations** for an additional **57** people, ranging from young children to older adults. Participants of the program reported feeling seen and understood, sometimes for the first time. People traveled from as far as Grand Junction to access these needed services.

Within the **Vocational and Transition** program, learners aged 16-21 had the opportunity to engage in job readiness training and community-based employment experiences. These opportunities provided learners with real-world skills, while also fostering independence and self-confidence. **100%** of transition program graduates were offered employment upon graduation.

Pictured: Firefly Staff member and learner during an outing (left), Firefly staff and learners at CSU Spurs Exceptional Rodeo (middle and right)



IMPACT OF FIREFLY'S PROGRAMS

Vocational & Transition Program Partners

Thank you to our Vocational & Transition Program partners who make our work possible and help our learners experience work, volunteering, and teamwork.



Jefferson County
PUBLIC LIBRARY



IMPACT OF FIREFLY'S PROGRAMS

Outreach Services

Firefly's outreach services encompasses a variety of needed resources and support that serve individuals in the community, from **in-home therapy** and **telehealth parent/caregiver guidance**, which ensures outreach into rural communities and for those who can't make it to clinic locations. We also provide **adult groups** support for adults who are ineligible for alternative social emotional support. Finally, our team engages in **community training and education** across a variety of businesses and organizations. Firefly served **137** individuals through outreach services in 2024.

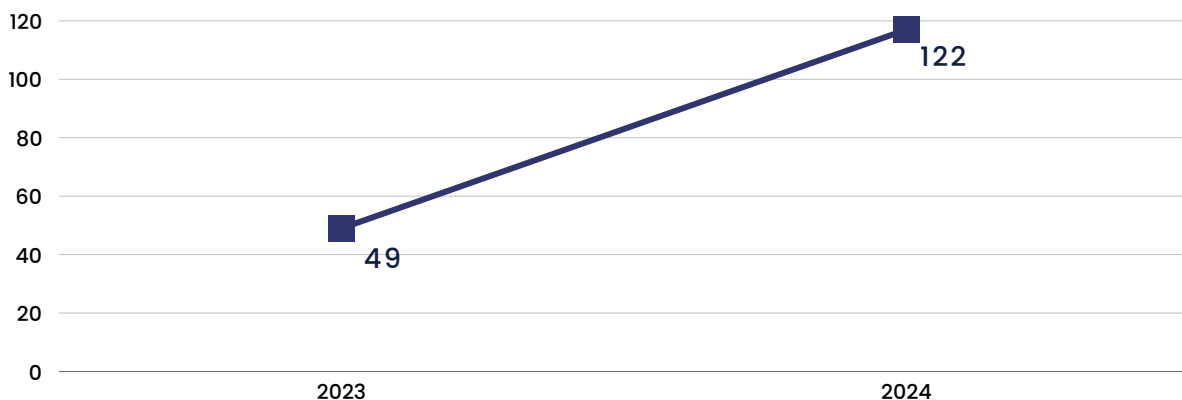
Outreach - Chickasaw Nation

Through our partnership with Chickasaw Nation, Firefly provided expert training and tailored resources. In 2024, Firefly impacted **122** individuals/families in the Chickasaw Nation via consultation, individual programming and specialty referrals.



Pictured: The Chickasaw Nation Pediatric Collaborative (CNPC) Team traveled to Colorado to visit Firefly. This team connects parents and health care providers in the Chickasaw Nation with experts in behavioral health, with Firefly as a primary partner.

Number of Chickasaw Individuals Supported by Firefly Autism from 2023 to 2024



IMPACT OF FIREFLY'S PROGRAMS

Outreach Trainings Provided by Firefly

Firefly Autism's team partnered with four organizations to provide **training and education**, directly impacting over **60** people for exponential impact across their communities and beyond.

Thank you to our long-term partners: Craig Hospital, Denver International Airport, St. Joseph's School in Enid, Oklahoma, and Kalix in Minot, North Dakota. Their dedication to continued training empowers the lives of your communities.



IMPACT OF FIREFLY'S PROGRAMS

Outreach - Adult Groups

Firefly Autism's adult groups have supported **25** learners in developing transferable skills, with **83%** achieving employment—when the national employment rate for adults with autism, ranges from 15% to 25%. The program emphasizes self-advocacy and peer interactions, fostering meaningful engagement and independence.

Pictured: Adult groups participants during group time at Firefly (left and middle), and enjoying an outing to the Denver Zoo Lights (right)



Adult Groups - Learner Success Stories

“A 75-year-old Firefly Autism learner has gained independence, advancing in her roles with the Denver Broncos, Colorado Rockies, and HoneyBaked Hams while living on her own. Once struggling with anxiety, she now confidently navigates challenges, advocates for herself, and embraces technology to support her growth.”

“Folks don't want to leave. The sessions are intended to be 8 weeks long. Even with different levels of ability, they mesh together well, find their people in the group.”

"I've learned so much about how to handle situations and stay safe"

-JeDo

"These people are my tribe. I can take off my mask and be myself at Firefly"

-JoKI

"I usually don't want to be with others, but everyone is friendly"

-RaGo



IMPACT OF FIREFLY'S PROGRAMS

Outreach - Firefly South

Firefly Autism's location in Old Town Colorado Springs provided services to **26** learners throughout 2024. These services extend to include our staff traveling to rural locations, as far as Elizabeth, CO, to provide necessary services and support to individuals and families.

Firefly South - Learner Success Stories

An 8-year-old learner requiring moderate support has made significant progress in self-regulation. Instances of aggression have decreased to just one in an entire month, and they now consistently choose positive coping strategies, such as taking a break or walking away, when faced with challenges. Additionally, they successfully participated in a week-long camp with new peers, demonstrating strong social growth with no aggression toward peers and only one instance with staff.

A 13-year-old high-support learner, previously requiring 2:1 staffing for a year, is now successfully transitioning to 1:1 support. At the Colorado Springs clinic, they are thriving with a single staff member, with two staff now only needed for community outings at home—a significant step toward greater independence.

A 20-year-old learner with limited vocal and written communication made a significant breakthrough during a crisis episode at home. In the midst of distress, he paused, requested a phone, and typed "help shoes," allowing his parents to support him in de-escalating. This moment was life-changing for his family, highlighting his growing ability to express needs and regulate emotions.



ADDITIONAL LEARNER SUCCESS STORIES

From the Chickasaw Nation:

- A parent shared that their 4-year-old, once reliant on aggression to express needs, now uses words after receiving services from Firefly Autism—saying, "Mom, will you play with me?" instead of pinching for attention. A transformative step toward connection and growth!

From Firefly South:

During a stressful moment, a nonverbal learner needed help with his shoes. Instead of getting frustrated, he typed "help shoes," using the skills learned at Firefly Autism—a profound milestone for his family. ◀

From Home-Based Services (HBS):

- A Denver Home-Based learner has gained independence using his communication device, engaging in meaningful conversations, creating schedules, and practicing safety skills. Now working with DIRT Coffee, he's preparing for an adult day program and vocational training this summer—an inspiring journey!

From Center-Based Services (CBS):

After eight years with Firefly Autism, one learner reached a milestone this Halloween. With his communication device and gentle prompts, he began trick-or-treating. By night's end, he proudly said "trick or treat" and "goodbye" on his own! ◀

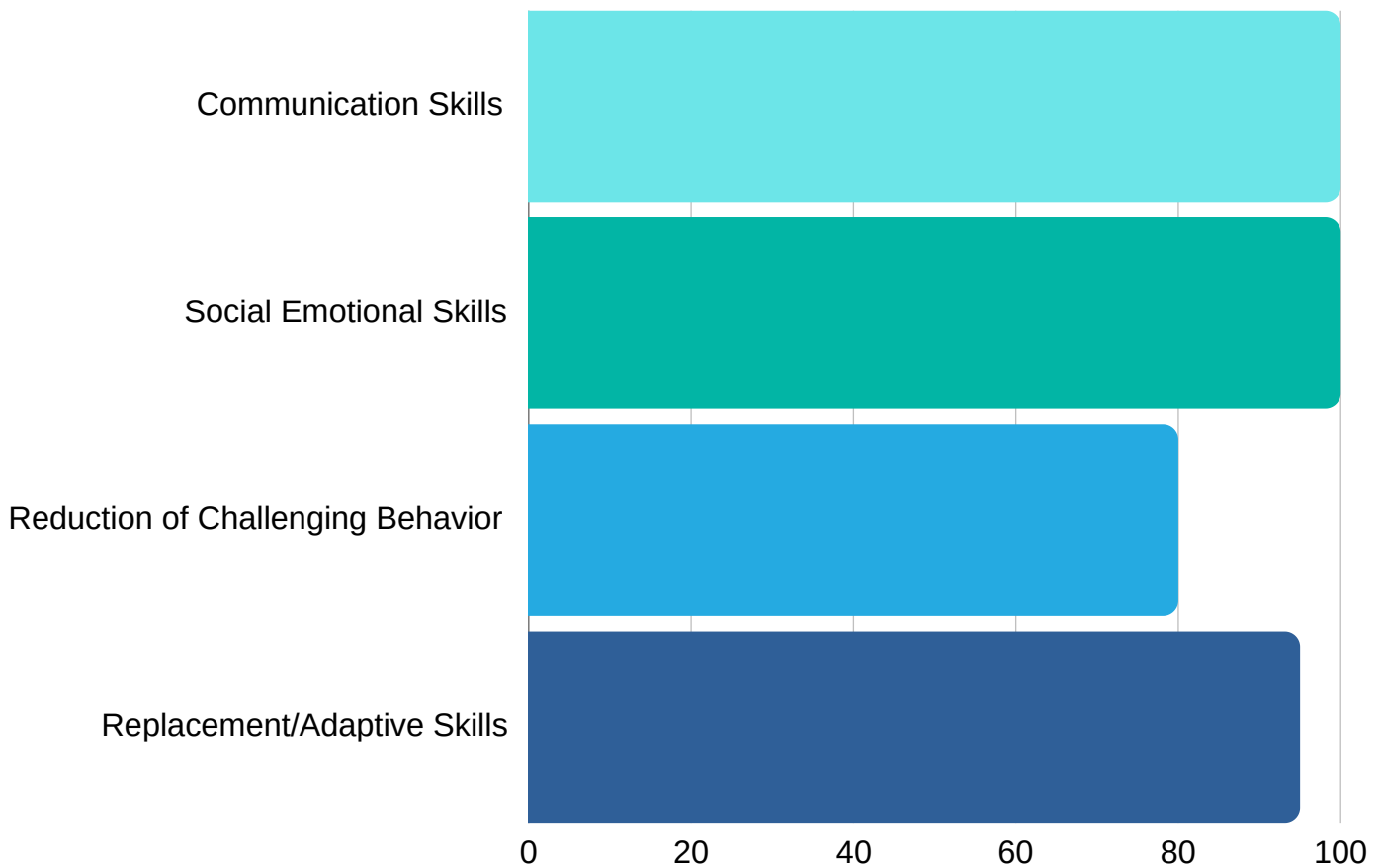
Pictured: One on one individualized care in a Firefly classroom (left), Two young early childhood learners enjoying an outing to CSU Spurs Exceptional Rodeo (middle), One of our Transition to Work Program learners working at Blue Star Recycling (right)



EDUCATIONAL IMPACT OF FIREFLY AUTISM ON LEARNERS

At Firefly, our learners make remarkable strides in communication, social skills, and independence, empowering them to thrive in their unique journeys. Through individualized, evidence-based interventions, we help learners unlock their full potential, fostering growth that extends beyond our walls and into their homes, schools, and communities.

110 individual treatment plans, ranging from individualized education plans and behavior plans, were developed and implemented to help learners develop skill acquisitions and behavior reduction goals. Below depicts the percentage of learners who made progress in some way in each of the following areas:



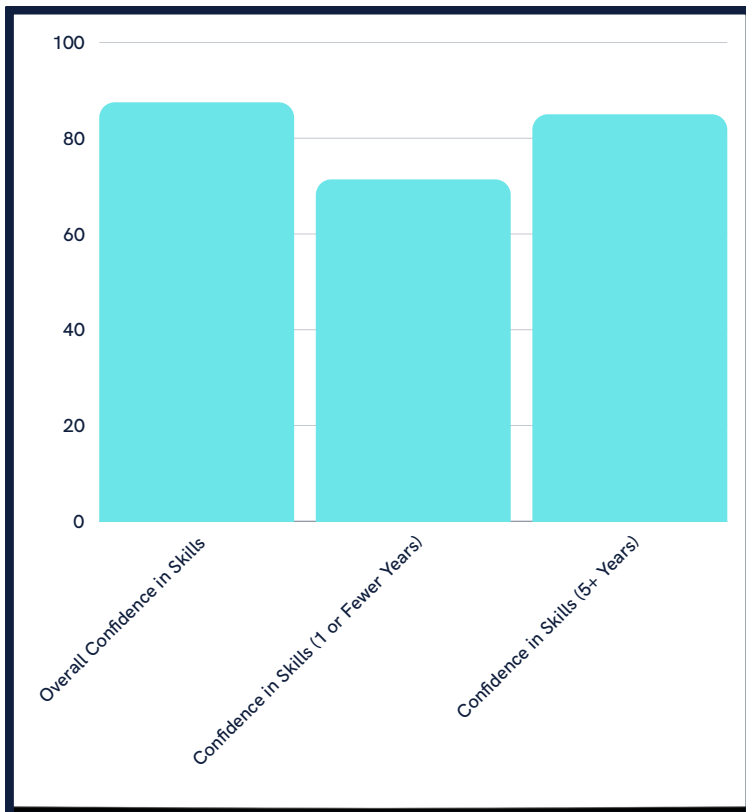
IMPACT OF FIREFLY AUTISM ON CAREGIVERS

In May 2024, Firefly Autism engaged QREM services to examine the differences between families new to Firefly Autism and those at Firefly for specific periods of time, along with differences between Firefly families and other similar groups of US parents.

Improved Quality of Life:

Firefly's support for our learners leads to significant, positive changes in overall quality of life. Quality of life scores increased by 16 points, representing a 28% improvement over the past year. Additionally, scores grew by five points (an 8.3% increase) as program tenure extended from one year or less to five years or more. These improvements are a result of the educational opportunities offered at Firefly, which identify each learner's unique strengths and needs.

QREM. (2024, May). Firefly Autism: Impact on Families.



Parental Confidence:

Among families with the highest program tenure (five or more years), 87.5% felt confident in their ability to support their children. Additionally, parents reported improved application of their parenting skills, rising from 71.4% for those with one or fewer years of tenure to 85% for those with five or more years.

This progress highlights how Firefly fosters skill development and reduces the cycle of frustration that many parents of neurodivergent children experience when they struggle to understand how to help their children.

QREM. (2024, May). Firefly Autism: Impact on Families.

(All data sourced from the QREM Report, 2024)

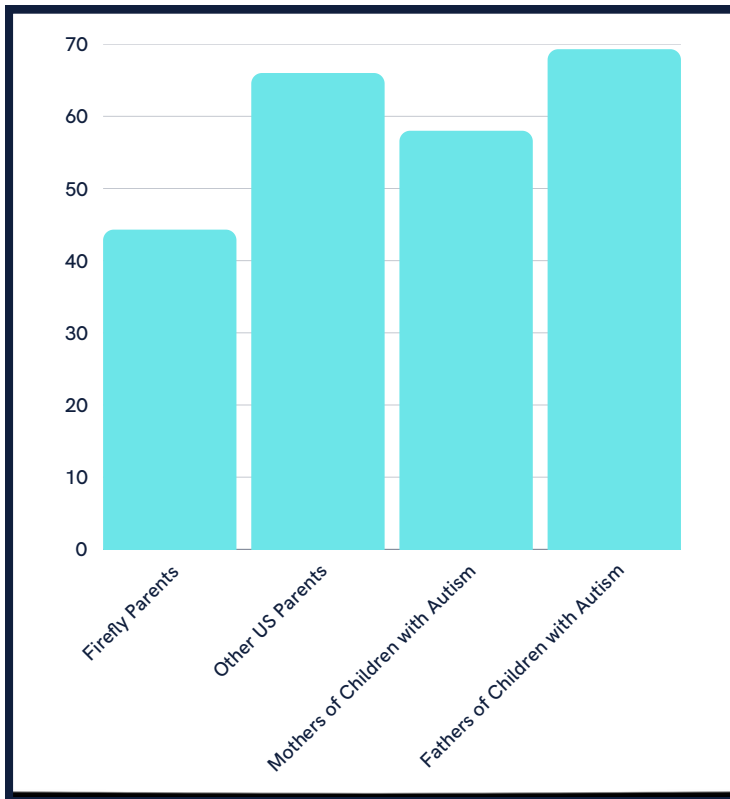
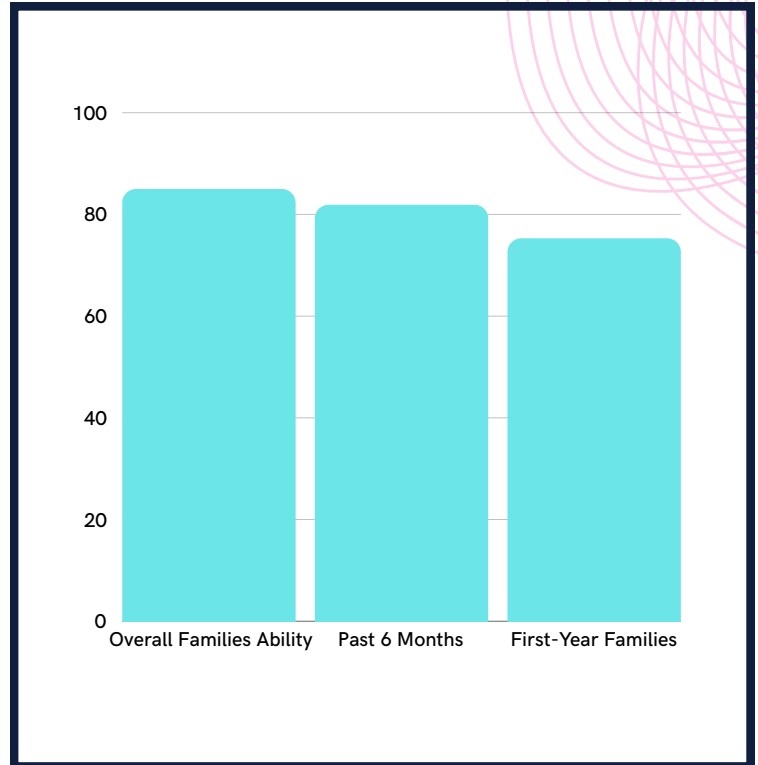


IMPACT OF FIREFLY AUTISM ON CAREGIVERS

Parent & Child Progress:

Parents reported significant improvements in their parenting skills, with 85% noting increased abilities. Over the past six months, 81.9% of parents observed measurable progress in their child's development, and within the first year of working with Firefly, 75.3% of families have established consistent and enjoyable routines.

QREM. (2024, May). Firefly Autism: Impact on Families.



Reduced Parental Burnout:

Firefly parents report lower parental burnout levels (44.3%) than the average US parent (66.0%) and other parents of children with autism (58.0% of mothers and 69.3% of fathers.)

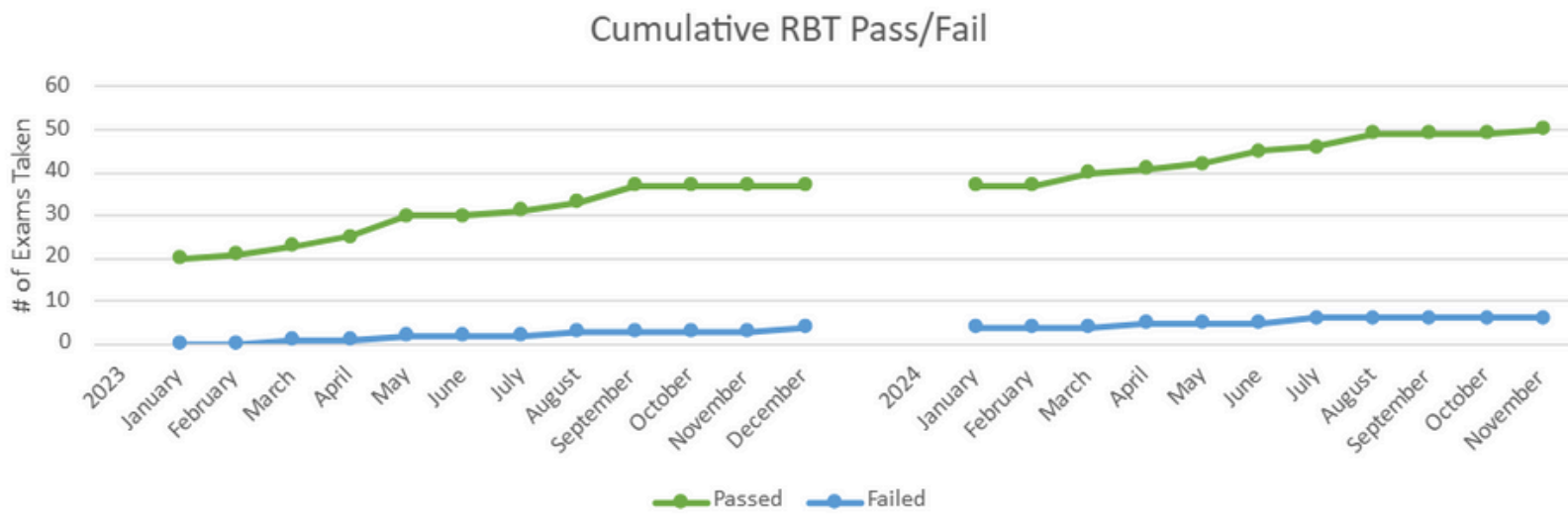
QREM. (2024, May). Firefly Autism: Impact on Families.

(All data sourced from the QREM Report, 2024)



STAFF DEVELOPMENT OPPORTUNITIES PROVIDED BY FIREFLY AUTISM

Firefly developed their own Registered Behavior Technician (RBT) training, which meets all requirements for individuals to gain a nationally recognized certification. This training is a crucial requirement to work with our Firefly learners. The data below depicts the number of staff members trained by Firefly, national certification exams taken, and extraordinary pass rates.



Firefly also provides continuing education reimbursement for employees and partners with **University Capella** and **Purdue Global**, offering **tuition discounts**, **discounted rates for Sophia Learning courses**, and **continued education units** for Board Certified Behavior Analysts.



Additional staff training and certifications offered:

- Practicum Supervision for those working towards a Board Certified Behavior Analyst Certification (BCBA)
- PCM certification for all clinical employees
- CPR/First Aid and Qualified Medication Administration certification for all senior RBT's and BCBA's



FIREFLY FACILITIES

Firefly Autism’s Lakewood building – the Max and Elaine Appel Campus – is a crucial component of the impact Firefly has on our community. The building was secured four years ago and has been a hub for some of the extraordinary work done by Firefly.

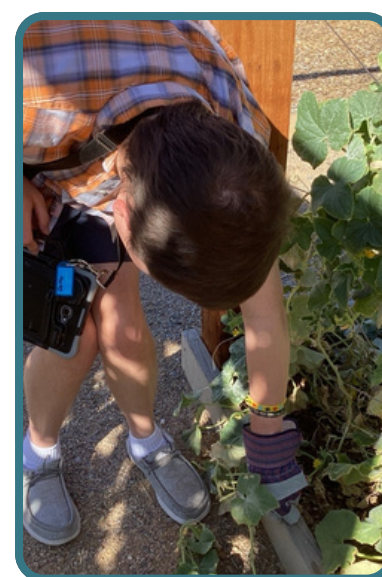
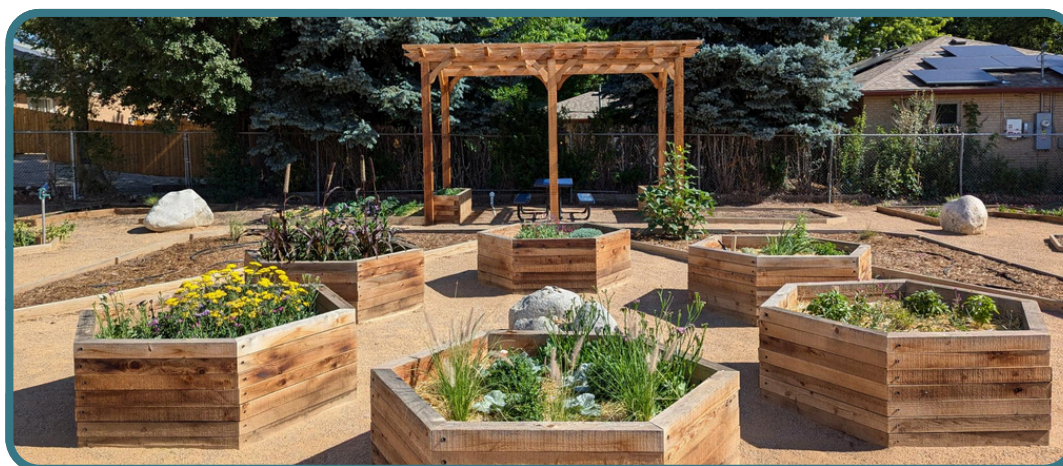
In 2024, significant improvements were made to Firefly’s 30,000 sq. ft. building and surrounding 2.6-acre property, including a full roof remodel, sewer repairs, and the completion of our Earl Lee Evans Sensory and Community Garden. However, given the age of the building, we continue to face challenges, including some HVAC repairs and ongoing facilities maintenance needs.



EARL LEE EVANS SENSORY & COMMUNITY GARDEN

Firefly Autism’s therapeutic garden (pictured below during the 2024 season) provides a peaceful outdoor space where students and staff can relax, take breaks, or work on goals in a new environment. It offers an excellent setting for outdoor learning, supporting social groups and individual objectives like communication and coping skills. The garden is accessible to individuals in Firefly’s center-based, social skills, and adult group programs, as well as to all staff members. Additionally, **100%** of Firefly’s center learners access the garden during outdoor time.

The garden has had a positive impact on both students and adults. School-aged students independently engaged with planting and watering (pictured below), while young adults in the transition program helped maintain the space throughout the season. Adults from the adult group participated in therapeutic garden sessions that incorporated art activities, reporting increased happiness during and after their time in the garden. Firefly Autism is deeply grateful to partner with Denver Urban Gardens (DUG) in bringing our sensory garden to life. Their dedication and hard work have been instrumental in creating a space that fosters continued education and growth for our learners.

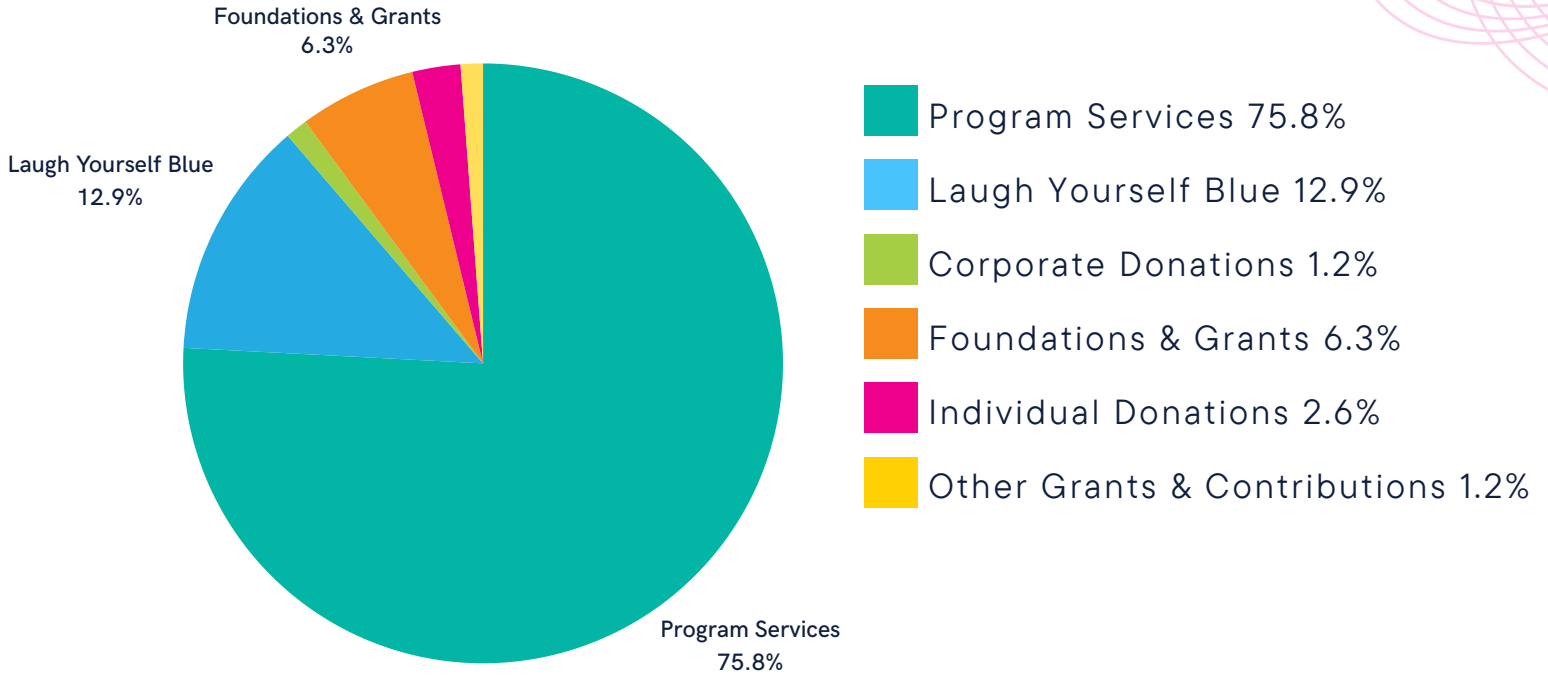


SUMMARY OF FINANCIAL PERFORMANCE

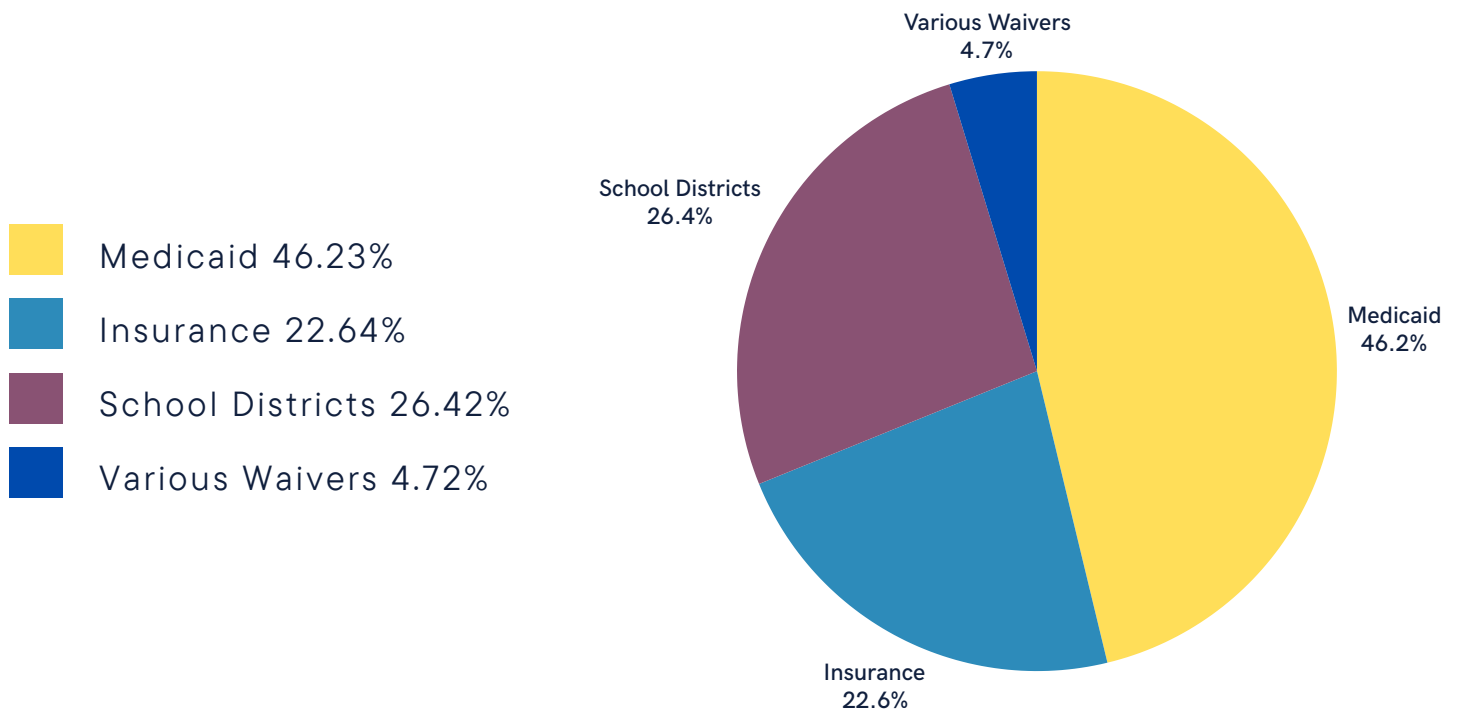
JULY 2023 - JUNE 2024

Firefly Autism's fiscal year runs from July 2023 to June 2024. The financial data below reflects this period.

Sources of Income



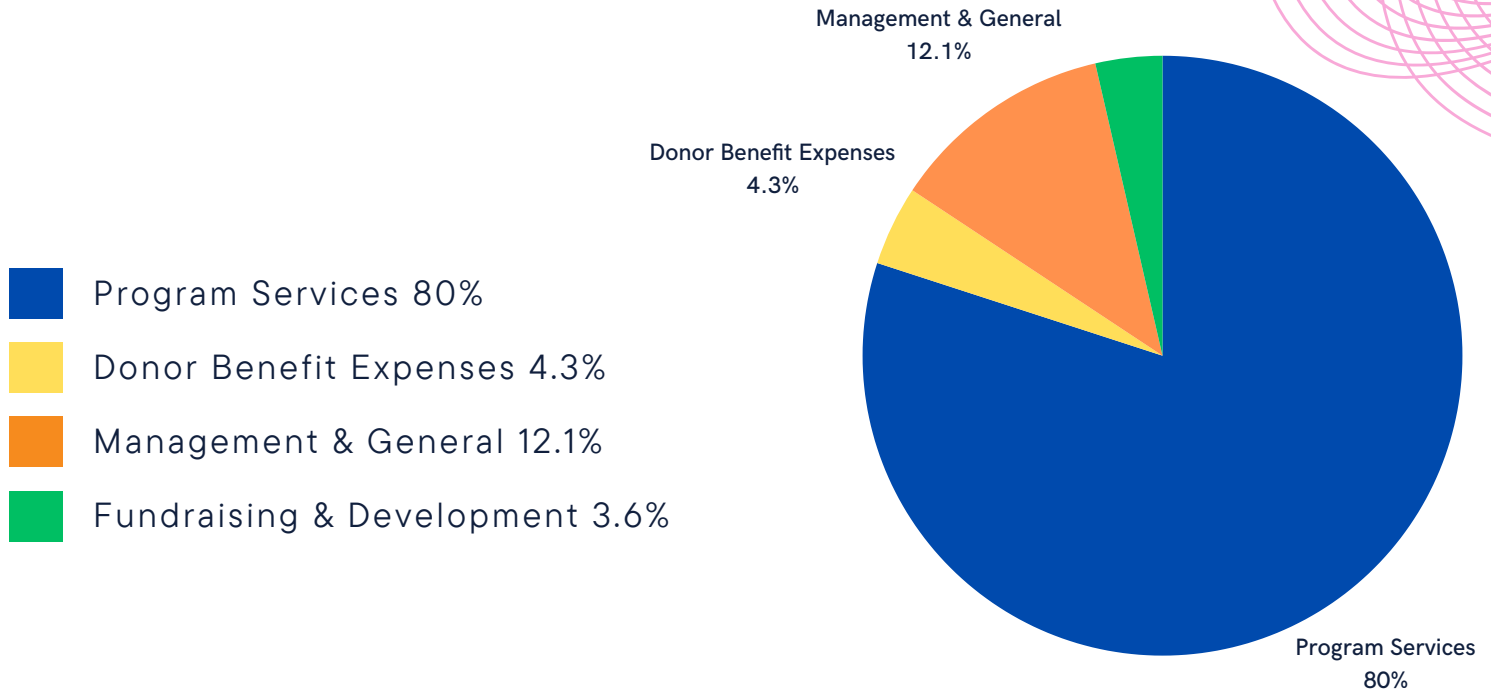
Funding Sources for Individuals



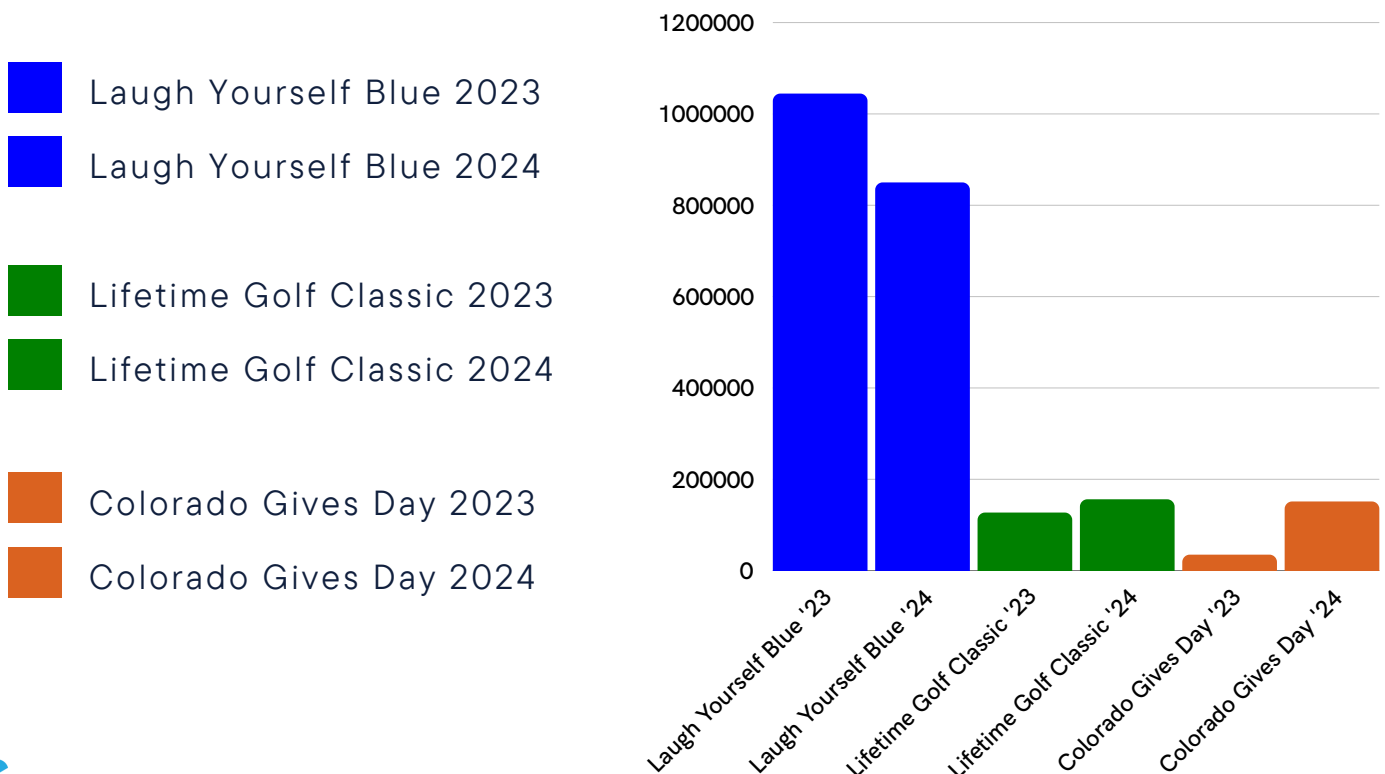
SUMMARY OF FINANCIAL PERFORMANCE

JULY 2023 - JUNE 2024

Organizational Spending



Event Revenue



FIREFLY EVENTS

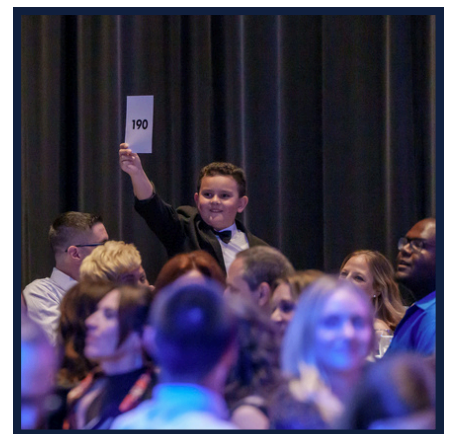


LAUGH YOURSELF BLUE 2024

A night of laughter, awareness, and impact

Firefly Autism hosted its 13th annual Laugh Yourself Blue gala at the Denver Center for the Performing Arts in April 2024, raising **\$858,219** to support individuals and families impacted by autism. With **600** attendees and **46** sponsors, this signature fundraiser leveraged the power of laughter to raise support for autism, the fastest-growing developmental disorder worldwide.

Pictured: 2024 Max Appel Luminescence Awardee, Gary Moore (top left), Dr. Amanda Kelly, Firefly CEO's opening remarks (top right), 2024 Event Co-Chairs, Javier Joto & Belissa Alvarez, and Peter & Lara Svedin (bottom left), Comedian, American Ninja Warriors Matt Iseman (bottom middle) and a selection of our event attendees.



FIREFLY EVENTS

2nd Annual Lifetime Golf Classic:

Lifetime Home Remodeling proudly hosted the 2nd Annual Lifetime Golf Classic at the beautiful Colorado Golf Club in August 2024, raising **\$69,513** to benefit Firefly Autism. With **27** sponsors and **88** golfers, this fun-filled day brought our community together for food and drinks, a round of golf, picturesque views, and most importantly - to support Firefly's mission. Lifetime Home Remodeling's partnership has helped Firefly create lasting impact for individuals on the autism spectrum.

Pictured: Peter Svedin, Founder and CEO of Lifetime Home Remodeling, presents Dr. Amanda Kelly with a \$69,513 check at the post event reception (left), Event attendees pose by a Len Lyall Chevrolet Car which was a winner prize (middle left), Firefly Director of Development Craig Baldwin interviews attendees on the green (middle right),



2nd Annual Summer Garden Party:

Firefly hosted our 2nd Annual Summer Garden Party in the beautiful Earl Lee Evans Sensory & Community Garden in September 2024, welcoming over **100** guests. This enchanting evening filled with delicious food and beverages from local vendors, live music, and the serene beauty of our garden highlighted the power of community and gratitude, reinforcing our commitment to creating meaningful connections and fostering lasting impact.

Pictured: Dr. Amanda Kelly with Colorado Gives Foundation CEO, Kelly Dunkin, in the Firefly Garden (left), plus a selection of event pictures.



FIREFLY EVENTS

Planned Giving Dinner: Creating Lasting Legacies

Firefly hosted its inaugural Planned Giving Dinner at the elegant Shanahan's Steakhouse on November 18, 2024, in partnership with Bernstein Wealth Management. This exclusive evening invited guests to explore how the transformative power of thoughtful estate giving can leave a lasting legacy, shaping a brighter future for the individuals and families served by Firefly.

Pictured: Firefly President & CEO Dr. Amanda Kelly and Director of Development Craig Baldwin, with event co-hosts, Bernsteins Molly Grasso and Emily Brengle (left), Craig Baldwin presents current Firefly planned giving legacies (middle), Dr. Kelly and Craig Baldwin (right)



Sensory Friendly Santa Event



In 2024, Firefly Autism hosted its 3rd annual Sensory-Friendly Santa Pictures event at our Lakewood location (pictured). This special event provided a calming environment for families to capture cherished holiday memories in a sensory-friendly setting.

A total of 14 families attended, joined by Firefly staff and board members, demonstrating our commitment to creating inclusive experiences that support and celebrate individuals on the autism spectrum and their families.



COLORADO GIVES DAY 2024



Firefly raised **\$150,289** during our Colorado Gives Day campaign to support the creation of inclusive sensory spaces. These funds will help us build an indoor sensory gym, update our outdoor playground, and complete the play area of our sensory garden, while also supporting our staff's ability to offer calming and therapeutic services that cater to our learners' unique needs. These spaces will benefit learners of all ages while fostering connection, growth, and well-being across our community.



MESSAGES FROM BOARD MEMBERS

“From the moment I walked into Firefly I could tell it was a special place. From my initial discussions with Dr. Amanda Kelly, and after touring the Firefly facility, the level of service, care and integrity was clear to me. The work Firefly does to help young people, and their families is inspiring and a necessity in the communities they serve. I am so appreciative and honored to serve on the board of directors alongside so many individuals driven to help Firefly succeed.”

-Morgan Wuthrich

“I joined the Firefly board in 2010, in large part because my son Jack was diagnosed as having autism at age 3 and has been attending Firefly since 2007. Through Jack I have seen first-hand the tremendous impact Firefly can have on improving the lives of people with autism and their families. So many aspects of day to day life taken for granted by most--such as potty training, leaving a child alone for even a moment in your own home, or just going out for dinner as a family--can seem like insurmountable challenges.

Firefly has helped Jack and hundreds of other children and their families navigate these things and greatly improve their quality of life. As a father, Firefly has been integral to my son and our family. As a board member, it is extremely gratifying to play a small role in Firefly doing the same for countless other families like ours and to see the organization continue to grow in order to help as many others as possible.”

-John Griffith

“I am honored to be on the board of Firefly Autism because this organization holds a special place in my heart. The work Firefly does is transformative—not only for the children it serves but also for their families and communities. I wanted to be part of a mission that makes a tangible difference in the lives of autistic children and ensures they have access to the resources and opportunities they deserve. The impact of Firefly extends beyond the students themselves; it creates a supportive network for parents and siblings, helping them navigate the challenges they face with understanding and compassion.

Being part of Firefly allows me to contribute meaningfully—from raising awareness and funds to directly participating in programs fostering growth, connection, and learning. There are countless ways to make a difference, and I’m eager to help expand Firefly’s reach to touch even more lives.

As Helen Keller once said, ‘Alone we can do so little; together we can do so much.’ I believe that by coming together as a community, we can offer children the tools, support, and love they need to thrive. Firefly Autism School is where collaboration and compassion come to life every day, and I am proud to be a part of it.”

-Suzie Murphy



THANK YOU FIREFLY STAFF

To our incredible staff at Firefly:

On behalf of our entire leadership team and Board of Directors, we want to express our deepest gratitude to each of you for the remarkable dedication, compassion, and energy you bring to Firefly Autism every day.

Your hard work and genuine care for our learners and their families are nothing short of inspiring. Whether creating inclusive spaces, counseling families through challenging situations, or finding innovative new ways to help our clients thrive, you consistently go above and beyond.

Your impact is creating brighter futures, stronger communities, and lifelong opportunities for those we care for, and makes our work in growing community support for Firefly's learners and staff even more meaningful.

Thank you for your creativity, resilience, and commitment to our mission. Your contributions this year have been extraordinary, and we are so proud to work alongside such an amazing group of people.

With gratitude,

Dr. Amanda Kelly

Dr. Amanda Kelly
President & CEO of Firefly Autism

Craig Baldwin

Craig Baldwin
Director of Development

Jamie Doucette

Jamie Doucette
Data & Impact Manager

Shea Ross

Shea Ross
Executive Assistant
Marketing & PR Coordinator



THANK YOU FIREFLY SUPPORTERS

To our Firefly community:

Reflecting on the first six months in my role, I am filled with gratitude for the incredible generosity and support you've shown Firefly Autism. Whether through your advocacy, resources, or time, your contributions have made an undeniable difference in the lives of the individuals and families we serve.

Due to your generosity, we've been able to enhance our services, expand them to new learners, and create a place where every autistic child and adult feels valued and supported. Your belief in our mission fuels the work we do and reminds us of the power of community. Thank you for investing in the futures of those we serve, and for standing with us in creating a more inclusive world.

We couldn't do this work without you, and I am so grateful to have you by our side.

With heartfelt appreciation,

Craig Baldwin

Craig Baldwin
Director of Development



FOUNDATION PARTNERS

Thank you to all of the foundations that made our 2024 work possible.



The Gateway Fund II
a donor-advised fund of



Salazar Family
Foundation



Dunkin Family Fund

Joan C. Lepriano Fund



TITLE & PRESENTING SPONSORS

Thank you to all of Firefly's significant supporters who donated \$50,000 or more during 2024.

*Max & Elaine
Appel*



The Denver
Foundation



The Colorado
Health Foundation™



Morgridge
FAMILY FOUNDATION



FIREFLY AUTISM DONORS

Firefly Autism extends heartfelt gratitude to all our incredible donors for their unwavering support and generosity. Together, you make it possible to create lasting, meaningful change in the lives of those we serve!

9News/TEGNA	Bradbury Family Partnership	Colorado Behavioral Health Administration
Abencio Rael	Bradley Tepper & Jan Gilman Tepper	Colorado Health Foundation
Adrienne Bush	Brandon Ginther	Colton Strickler
Aleshanee Conner	Brandon Turner	Corey Bennett
Alex & Kaitlyn Frazier	Brent Snyder	Craig Knippenberg
Alex Sterling	Brett Kuhn	Dana Miller
Alex Stringari	Brett Winingham	Daniel Dobler
Alex Weishaar	Brian Friedman	Daniel Gomer
Alex Wright	Brian Kreps	Danny Gamache
Alisa Wilson	Brooke Shellhorn	Darin Hammerschmidt
Allan Matsuo	Brown & Brown, Inc	Darrell Olson
Allen Gregory	Byron Stuart	David Edwards
Alpine Bank	Calandra Bodilis	David Feiertag
Amalea Karavias Vega	Carin Wagner	Deb Hinsvark
Amanda Kelly	Caring for Denver Foundation	Deb Howitt & Larry Hoffer
Amy Bittner	Carol Reagan	Debbie Adamole
Amy Feldman	Carolyn Fineran	Deborah Brackney
Amy Rinner	Carrie Cusker	Dejean Harden
Amy Shorter	Catharina Hughey	Denver Foundation
Andrea Ryan	CBS Television	Denver Urban Gardens
Andrew Abrams	Celeste Gardner	Developmental Pathways
Angela Johnson	Charles Rhoades	Devin Harter
Angela King	Chris Celecki	Diane Heller
Anna Costello	Chris Henry	Dick & Jeanne Saunders
Archana Nair	Chris Mast	Donald DeMarco
Arnav Dalmia	Chris Saehler	Donna Goldin-Evans
Ashley Brush	Christian Winward	Dr. Laurie Sperry
Ashley Grace	Christin Eriksen	Drew Pyburn
Atala McBride	Christina Cline	DTC Optimist Club of Greenwood Village
Audrey Morrison	Christina Montoya-Pablo	Dunkin Family Fund
Aurora Zarate	Christopher Zumbrennen	Dustin Whitmore
Beanstalk Foundation	Chuck & Cyndi Wolff	Early Milestones Colorado Circle
Bill & Cheryl Rooney	Cindy & Jason Altberger	Edward Francis
Bill Kitamura	Cindy Shamley	Eileen Villanueva
Bill Mason	City and County of Denver	Elaine Appel
Bill Plummer	Claire Fitzgerald	Eli Lyons
Bill Poole	Clay Condon	Elisa Beerbohm
Bob Loeb	CoBank	Elizabeth Austin
Bonnie Fischel	CoCo Criste	Elizabeth Munoz
Brad Drury	Colfax Marathon Partnership, Inc.	



FIREFLY AUTISM DONORS

Elsa Holguin
Embodied Labs
Emily Henderson
Emily Schaefer
Eric Osborne
Erin Pulling
Evan Sisneros
FirstBank Holding Company
Flo Hernandez Ramos
Frank Acosta
Gabe Cisneros
GAF
Gali Beh
Gary Moore
GHP Investment Advisors, Inc.
Grace Cocaneti
Greg McCarthy
Gregg Scott
Guide Real Estate
Gyan-I Inc.
Han-Hsien Tuan
Harry Neumann
Heather Magic
Heather McCoy
Howard Dammarell
Howard Mo
Ingrid Hilbink
Inspire Orthodontics
Jack Ryan
Jaime Hohl
James & Barbara Lyall
James Gurule
Jamie Doucette
Jan Gordon
Jane E Rosenbaum
Janet Marine
Janette Ferguson
Jared Vigil
Jason Buniger
Jason Fellows
Jason Kleinhelmer
Jason Pavia
Javier Soto
avin Cyriacks
Jean May
Jeff Gray
Jeff Mostek
Jeff Plous

Jeff Porter
Jen Scott
Jenn Depauw
Jennifer Nolte
Jenny McCarthy
Jenny Ruud
Jessen Gregory
Jessica Dunbar
Jessica Ostoyich
Jessica Yechout
Jhon Londono
Jill Johnson
Jill Wright
Jim Garcia
Jim Tolliver
Jimmy Johnson
Joan Mast-Loughridge
JoAnn & Matthew Muller
Joanne Davidson
Joe Long
Joe Palladino
Joel and Tiffany Appel
John Ellis
John Griffith
John Loewy
John Morgridge
John Smith
Josh Coffey
Joyce Rosenblum
Judy Weiner
Justin Chalfant
Kate Kerkmans
Katherine VanderWoude
Katie Bower
Kay Cowling
Kaycee Villanueba
Keep Driving Foundation
Ken Brown
Ken Wasmundt
Kendra Scott LLC
Kevin Flores
Kevin Smith
Kiko Villarreal
Kimberley J Pretzer
Kimberly Bradney
Kimberly Roy
Krista Roberts
Kristen Brown

Kristin Milano
Kroger
Krystal Than
Kudla Family Charitable Foundation
Kumi Xiong
Kyle Endres
Lara Heisler
Laura Kathman
Laura Kranish
Laura Morales
Laura Rubio
Laurel Tucker
Lauren Frazier
Leslie Hancock
Liberty Mutual
Lifetime Roof & Solar
Lifetime Windows & Siding LLC
Lincoln Baca
Linda & Don Childears
Linda Appel Lipsius
Linda Kicak
Lindsey & Ryan Skeuse
Lisa Vega-Fields
Lockheed Martin
Loes Nardi
Marcie Donaldson
Margaret Casart
Marisol Villagomez
Mark & DonnaDale Turner
Mark Cornetta
Mark Richtermeyer
Mark Thrush
Marlene De La Rosa
Lorez Meinhold
Lori K. Martella & Darrin L. Hull
Lydia Flores
Lynn Nease
Lynn Skinner
Mairead Dolan
Marathon Petroleum
Marcella Schieffelin
Marley Laffoon
Marta Tomtas
Mary Hanewall
Mary Kay Lofgren
Mary Leprino
Matt Keillor
Matt Teeters



FIREFLY AUTISM DONORS

Meghan Klassen
Melvin and Elaine Wolf Foundation
Metropolitan State University of Denver
Michael Gutierrez
Michael L. Fordyce
Michael Stewart
MidFirst Bank
Mike Laskin
Mike Lopez
Mike Pirrami
Miranda Foley
Molly & Joel Kufeldt
Morgan Endicott
Morgan Wuthrich
Nancy Sheehan
Nayeli Hernandez
Nick Montera
Nick Sophinos
Nicole Hayes
Nicole Pominville
Nicole Taylor
Olivia Clark
Pablo Perez
Pacific Office Automation, Inc
Paige Patterson
Pam Cabral
Patricia Estes
Patricia Silva
Patty Wakumoto
Paul Ferguson
Paul Louderman
Perry Noble
Peter Svedin
Philip Weathers
PNC Financial Services Group
Pohlad Family Foundation
Point b(e) Strategies LLC
Rachel McKiernan
Randy Sachter
Ray Merenstein
Rebecca Nalli
Rhonda Sparlin
Richard Flores
Richard Olona
Robin McEvoy
RubinBrown LLP
Runco Productions LLC.
Ryan Buerger
Ryan Cook
Sadye Hazan
Salazar Family Foundation
Sally Ford
Sam Goldsmith
Sam Reiser
Samantha Stoler
Sami and Robert Hazan
Samson Eberhart
Samuel and Nancy Gary
Sandra Gudat
Sara Kouhdari
Sara Shorin
Saurabh Gupta
Scott & Sarah Burg
Scott Knaubert
Scott Ray
Shana Wade
Shaylisa Turner
Shelly Roney
Shepard Nevel
Sherry & Howard Feingold
Shilay Mellyn
Sisters of Saint Francis
Solich Fund
Spencer Fugita
Stacey Burns
Stanton & Maria La Breche
Stella Yu
Stephanie Nevel
Stephanie Simon
Stephen & Camille Weber
Steve Chase
Steve Scott
Steven Kris
Stewart Vanderwilt
Susan & John Denny
Suzanne Hayes
Suzanne Murphy
SymphonicHCM
Tammy Otero
Tara Beiter-Fluhr
Team Player Productions Inc
Teri Koren
Terry Lantz
Texas Roadhouse
The Boettcher Foundation
The Morgridge Family Foundation
The Sullivan Group
Theresa Bradley
Theresa Fordyce
Thomas King
Tiffany Feingold
Tiffany Gatch
Tim Andrews
Tim Ryan
Tim Sugrue
Timothy McEntee
Todd Lukasik
Todd McWhirter
Tony Frank
Travis Plakke & Leigh Sullivan
Tree King
Tyler & Megan Sparks
Tyler Warner
United Way
Vanecia Kerr
Virginia Douglass
Wayne Taylor
Wells Fargo
Western Storage & Handling
Wilfred Miles
Williams Weese Pepple & Ferguson PC
Wyatt McElwain
Yael Moore
Yesima Sherrod
Yolanda Ortega
Yolanda Webb
Yvonne Sanchez
Zack Sanders
ZipSprout

*Firefly Autism is grateful for all of its donors who gave anonymously over the year.



WAYS TO GIVE TO FIREFLY AUTISM

General Donations:

Supporting Firefly Autism through general donations helps fund essential needs such as center operations, supplies, maintenance, and events. Contributions can be made easily through our website or the Colorado Gives page, ensuring impactful support for our mission

- To donate to the general fund, please visit: <https://www.coloradogives.org/donate/fireflyautism>
- You can also send a check to Firefly Autism at: 2001 Hoyt St. Lakewood, CO 80215.

THE IMPACT OF YOUR DONATION:

<p>\$250</p> <p>Provide kits for planting and growing produce in our Earl Lee Evans Sensory & Community Garden.</p>	<p>\$250</p> <p>Sponsor an "Autism 101" community training for one community group, such as emergency services workers & first responders.</p>	<p>\$250</p> <p>Sponsor social emotional skills training for one family.</p>	<p>\$250</p> <p>Provide sensory supplies such as headphones, yoga balls, sensory toys, and more for our learners.</p>
<p>\$500</p> <p>Sponsor annual maintenance of our Earl Lee Evans Sensory & Community Garden.</p>	<p>\$500</p> <p>Sponsor a Community Education & Engagement session at Firefly Autism.</p>	<p>\$500</p> <p>Sponsor a 4-hour behavioral skills assessment for one learner.</p>	<p>\$500</p> <p>Provide support for playground equipment repairs and maintenance.</p>
<p>\$1,000</p> <p>Sponsor our Transition to Work Program's community outings for job skills practice.</p>	<p>\$1,000</p> <p>Sponsor trauma care training for 4 Firefly staff members.</p>	<p>\$1,000</p> <p>Sponsor cognitive & achievement testing for one family to assist with access to needed supports.</p>	<p>\$1,000</p> <p>Sponsor one year of maintenance for the Transition to Work Program's Computer Recycling Room.</p>
<p>\$2,500</p> <p>Sponsor our Adult Groups & Social Skills Groups for one month.</p>	<p>\$2,500</p> <p>Sponsor training for Firefly's Autism's Neurodiversity Certification for staff members.</p>	<p>\$2,500</p> <p>Sponsor a full, comprehensive diagnostic evaluation for one family.</p>	<p>\$2,500</p> <p>Support the cost of building repairs and maintenance at our Lakewood & Colorado Springs centers. Your name will be engraved in one of our bricks!</p>



WAYS TO GIVE TO FIREFLY AUTISM

Donate to Firefly Autism



Colorado Child Care Contribution Tax Credit

When you donate to Firefly Autism, you are giving the gift of hope, community, and life changing support. As a 501(c)(3) nonprofit, your donation is tax deductible and could further qualify for the Colorado Child Care Contribution Tax Credit. Firefly's tax ID is 30-0199263.

Planned Giving:

Planned giving is a meaningful way to support Firefly Autism, allowing you to leave a lasting legacy through bequests, trusts, or other long-term contributions. Your planned gift ensures ongoing support for our mission and the individuals we serve, while you benefit from significant tax advantages.

➤ For more information on planned giving, please visit:
<https://fireflyautism.org/get-involved/give/planned-giving>.



WAYS TO GIVE TO FIREFLY AUTISM

The Sofia Isabel Soto Fund:

The Sofia Isabel Fund for Firefly Autism honors the memory of Sofia Isabel Soto, who received love and support from Firefly Autism. Established by her father, Javier Alberto Soto, President and CEO of The Denver Foundation, this fund helps provide essential services to children like Sofia. Your contributions ensure continued support for these life-changing programs.

➤ For more information on the Sofia Soto Fund, please visit:
<https://fireflyautism.org/get-involved/give/sofia-isabel-soto-fund>

Pictured: The beautiful Sofia Isabel Soto pictured with, and by, her loving family.



“We witnessed firsthand the incredible work that Firefly does every day and the enormous impact you have in the lives of so many families. We also saw very clearly how much demand there is in our community for your services and the tremendous lengths you go to in order to meet that demand. But to continue doing so, Firefly needs the passion and support of all of us. So, I’d like to thank all of you because you made the support Sofi received from Firefly possible.

As a way to honor Sofi, we have established an endowment fund for Firefly Autism at the Denver Foundation. It’s our way of trying to help other kids like Sofi to receive the love and support from the dedicated team at Firefly”

-Javier Soto

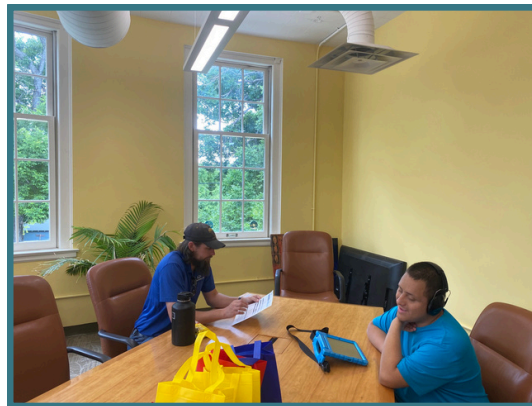


WAYS TO GIVE TO FIREFLY AUTISM

Volunteer:

Volunteering with Firefly Autism is a hands-on way to make a meaningful impact. Whether assisting at events or supporting daily operations, your time and skills help us further our mission and support the individuals we serve.

- For more information on volunteering, please contact Shea Ross at sross@fireflyautism.org.



Attend or Sponsor Events:

You can support Firefly Autism by attending or sponsoring our events held throughout the year. Sponsorships provide valuable contributions to our mission, while event attendance helps raise awareness to support our programs.

- Follow Firefly's social media or sign up for the newsletter to stay up to date on all events happening at Firefly.



STAY CONNECTED



https://www.instagram.com/firefly_autism/



<https://www.facebook.com/fireflyautism>



www.linkedin.com/in/fireflyautism



<https://x.com/FireflyAutism>



<https://fireflyautism.org/contact>

CONTACT US



2001 Hoyt St. Lakewood, CO
80215



303-759-1192



info@fireflyautism.org

