

# 2025



## ANNUAL IMPACT REPORT

Firefly Autism



# TABLE OF CONTENTS

---

<b>1</b>	Message from President & CEO
<b>2</b>	Message from Board Chair
<b>3</b>	Firefly Senior Leadership
<b>4</b>	Firefly Staff Photo
<b>5-6</b>	Major Milestones
<b>7</b>	Advocacy Efforts
<b>8-11</b>	Firefly Programs
<b>12-13</b>	Professional Training
<b>14</b>	Success Stories
<b>15</b>	Survey Based Impact
<b>16</b>	Earl Lee Evans Sensory & Community Garden
<b>17</b>	Staff Development
<b>18</b>	Community Engagement
<b>19</b>	Colorado Gives Day
<b>20-21</b>	Firefly Events
<b>22</b>	Facility & Capital Improvements
<b>23</b>	Firefly Financials
<b>24-25</b>	Firefly Board of Directors
<b>26-29</b>	Firefly Sponsors & Donors
<b>30-31</b>	Ways to Give to Firefly





## Welcome to Firefly Autism's 2025 Impact Report.

In 2025, Firefly Autism  
expanded the scale of our  
work, achieving more than  
**1,000%** growth in measured  
reach and impacting over  
**3,000** individuals through  
direct services and  
professional training efforts.



## OUR MISSION

Empowering autistic individuals experiencing access barriers to thrive through personalized programs and fostering supportive community connections.

## OUR VISION

Firefly has created communities where autistic individuals are empowered and fully supported.

## FIREFLY'S APPROACH

Firefly Autism works constantly with the needs of the community to reimagine the landscape of behavioral health. We support autistic individuals from 18 months to 70+ years, in addition to education systems, medical systems and a broad variety of community programs across the nation. We utilize the principles of assent-based and values-based practices to ensure a wholly person-centered approach to care.



Dear Firefly Community,

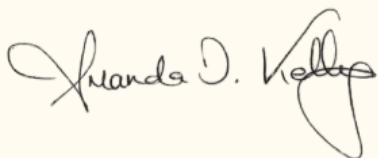
Reflecting on the past year, I am deeply inspired by the progress we've made together. Guided by our mission to empower autistic individuals experiencing access barriers to thrive, we continue strengthening the landscape of behavioral and mental health across the lifespan.

Firefly Autism remains a place where every person is valued and supported, from early intervention for young learners to programs that empower the most unique teens and adults reach their individual goals. This year, we expanded our offerings in both depth and breadth, now serving learners across the state of Colorado and in multiple states across the US. Through strategic planning, our focus on staff and facilities is the strongest it's ever been, working towards optimal environments for learning and growth. These collective efforts helped us support more than 3,000 children, adults, and families.

None of this impact would be possible without you. Your support allows more underserved children and families to access services and helps us train and equip caregivers, schools, and organizations statewide. This year, we were also humbled and honored to receive a truly transformative gift that allowed Firefly to establish an endowment and a building reserve. Milestones like these recognize the importance of our work and help secure a strong, sustainable future for Firefly. As you explore this year's report, I invite you to take pride in the meaningful outcomes your support has helped make possible.

Every milestone achieved and every challenge met reflects the power of this community and the shared belief that every individual deserves the opportunity to succeed.

Thank you for standing with us, championing our mission, and supporting the children, adults, and families who rely on Firefly.



**Dr. Amanda Kelly**  
**President & CEO of Firefly**  
**Autism**





Dear Firefly Community,

It has been a truly remarkable year for Firefly. As we reflect on our journey, I'm filled with pride and gratitude for all that we've accomplished together. This year's Impact Report captures the depth and breadth of our work—and the lives we've touched through our unwavering commitment to our learners and their families.

At the heart of Firefly's success is our extraordinary staff. Their dedication, compassion, and expertise continue to inspire us all. Every day, they bring light and learning into the lives of children with the highest needs, and we celebrate them with deep appreciation. This year, our Board adopted a bold new strategic plan that charts an ambitious course for the future. It's a plan rooted in our values and driven by our mission—to provide individualized, high-quality care to those who need it most.

We're also proud to share two major milestones that will strengthen Firefly for years to come. First, thanks to a generous gift from an incredible donor, we've established a building maintenance reserve to ensure our beloved facility remains in top operating condition. Our building is more than just a space— it's a sanctuary of growth and possibility. This reserve allows us to preserve it with care and foresight.

Second, we've taken the first steps toward building an endowment. This marks a transformative moment for Firefly, as the endowment will provide vital operating stability. It ensures that our programs can continue to thrive with consistency, even in uncertain times, and that our learners will always receive the care and support they deserve.

Our committed board joins me in thanking you for being part of this journey. Your support and belief in Firefly fuels our progress and makes everything we do possible. Together, we are building a brighter future—one learner, one family, one moment at a time.

With gratitude,



**Linda Childears**  
**Firefly Autism Board Chair**





## FIREFLY SENIOR LEADERSHIP



**President & CEO**  
**Dr. Amanda Kelly**



**Senior Director of  
Business Operations**  
**Allison Moffett**



**Director of Clinical  
Services**  
**Meghan Tolley**



**Director of  
Development**  
**Craig Baldwin**



**Director of Training  
and Education**  
**Cristina Theis**



**Director of Center  
Based Services**  
**Amber Varela**







## FIREFLY STAFF



At the heart of Firefly is an extraordinary team of dedicated professionals who show up every day with an unwavering commitment to the individuals and families we serve. This year's impact is a direct reflection of your work: the long hours, thoughtful collaboration, and deep care that often happens quietly and without recognition. You meet each learner where they are, and your contributions shape Firefly's impact in ways that extend far beyond what numbers can measure.

Thank you for your professionalism, your heart, and your belief in our mission. Firefly's progress, growth, and future are possible because of you.





## MAJOR MILESTONES REACHED

### **Establishing Our First Building Reserve & Endowment: A Transformational Gift for Firefly's Future**

This year, Firefly Autism reached a profound milestone in our organizational history. Through an extraordinary anonymous gift, Firefly is establishing its first-ever Endowment and Building Reserve Fund.

By providing a dependable, permanent source of funding for our core needs, our Building Reserve and Endowment funds ensure that Firefly can focus its resources on what matters most: delivering life-changing therapeutic and educational services without disruption. We are deeply grateful to the anonymous donor who made this milestone possible.

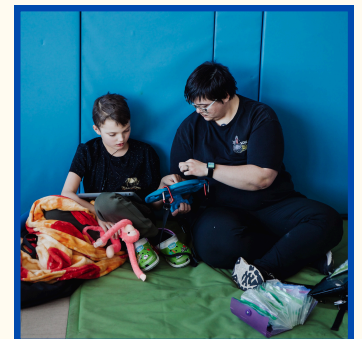
#### **Building Reserve Fund**

The building reserve will ensure:

- Critical building system upgrades such as HVAC and energy efficiency improvements.
- Long-term capital planning, allowing Firefly to proactively address repairs and upgrades
- Sustainable growth, ensuring our campus can evolve alongside the needs of our learners and clinicians for decades to come.

#### **Endowment Fund**

The establishment of Firefly's first endowment marks a defining step toward long-term financial stability for the organization. It reflects a deep commitment to responsible stewardship, and proactive planning while honoring the vision of a donor who understood that strong infrastructure is essential to lasting impact. This fund also creates a meaningful opportunity for legacy giving, inviting supporters to invest in the future of Firefly by securing the services that allow autistic individuals to thrive.



## MAJOR MILESTONES REACHED

### **A Landmark Partnership with the Colorado Department of Education**

A major milestone this year was Firefly securing a statewide contract with the Colorado Department of Education. This partnership expands access to high-quality autism support for districts across Colorado, particularly in *rural* communities where resources are often limited.

Through virtual and on-site consultation, targeted training, and collaborative planning, Firefly is strengthening district capacity to support learners with autism across all grade levels and build systems that last.

Together, this work reflects Firefly's commitment to serving communities facing access barriers and ensuring that every child, regardless of location, can benefit from evidence-based autism supports.



### **Expanding Access in Rural and Underserved Communities**

This year, Firefly reached a major milestone by securing a contract with the Estes Park School District, expanding our mission of empowering autistic individuals experiencing access barriers to thrive through inclusive support within a public school setting.



## FIREFLY ADVOCACY EFFORTS



Thanks to support from the Morgridge Family Foundation, along with additional generous donated time of RD Sewald of Sewald Hanfling and Associates, Firefly strengthened our advocacy work over the past year and expanded our role in policy discussions that affect the most vulnerable in our community.

With continued guidance from RD and his team, Firefly met with a number of key State figures including Mayor Strom, Commissioner Zenzinger, Representatives Sirota and Taggart, Senators Kirkmeyer and Amabile. These meetings ensured visibility and education on the barriers facing our learners and helped advance conversations on issues critical to maintaining access to high-quality care.



Firefly was grateful for the opportunity to engage with the Department of Health Care Policy and Financing (HCPF) on recent and upcoming changes to state Medicaid rates and regulations affecting autism treatment. Discussions covered reimbursement models, authorization rates, and policy structures that directly shape service access for families, ensuring the voices of profoundly impacted children are not lost.

The support also allowed for engagement with state and national associations including the Council for Autism Service Providers (CASP) and the Colorado Association of Family and Children's Agencies (CAFCA), helping us stay aligned with local and national policy and regulatory trends.



A key focus of our advocacy is making sure that children, teens, and adults who face the greatest access barriers - those with significant support needs, those living in rural areas, and those without the resources to advocate for themselves - are not lost in policy decisions.



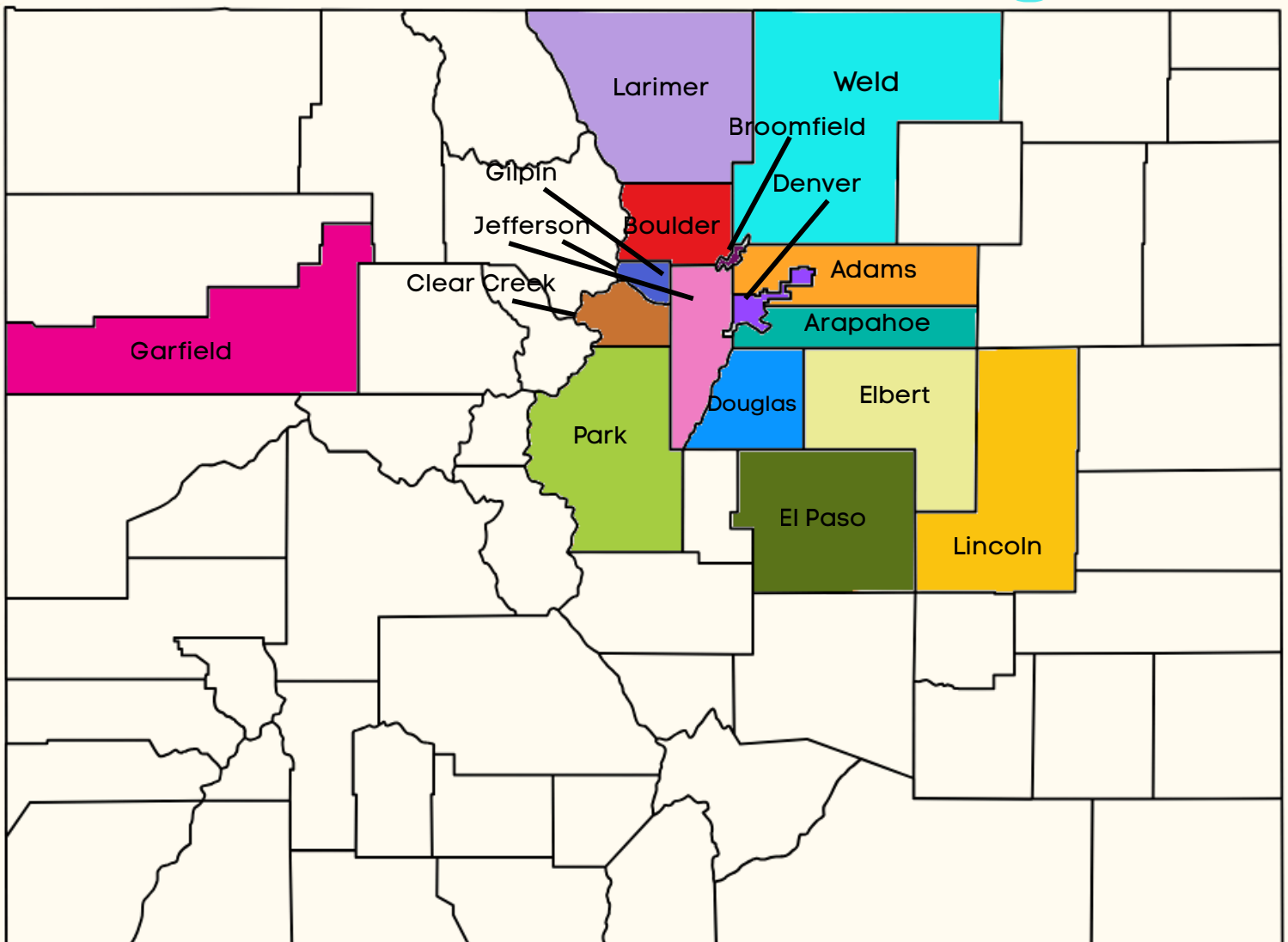
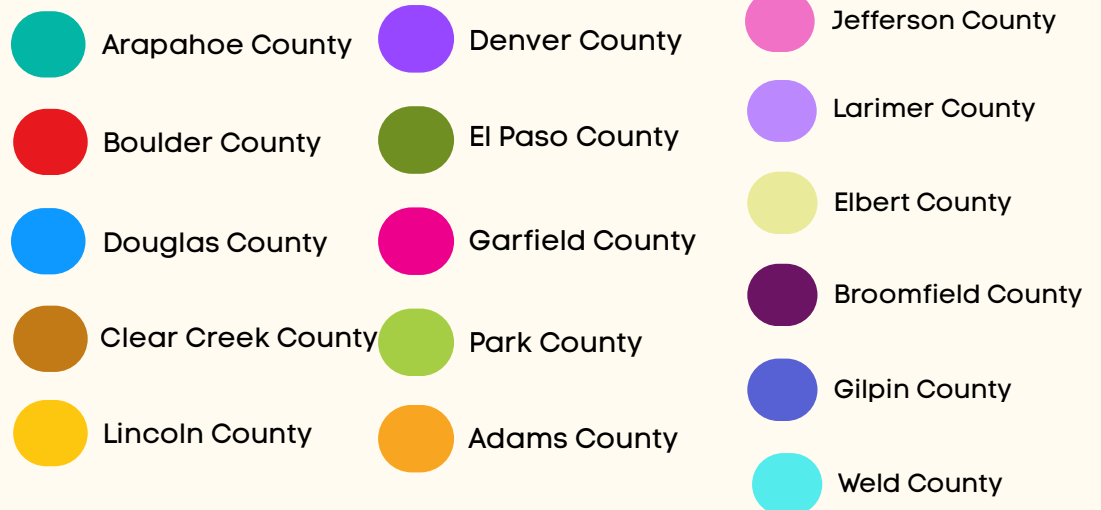


## FIREFLY PROGRAMS

### FIREFLY AUTISM COUNTIES SERVED IN COLORADO

16

Firefly currently serves individuals in 16 counties across Colorado.

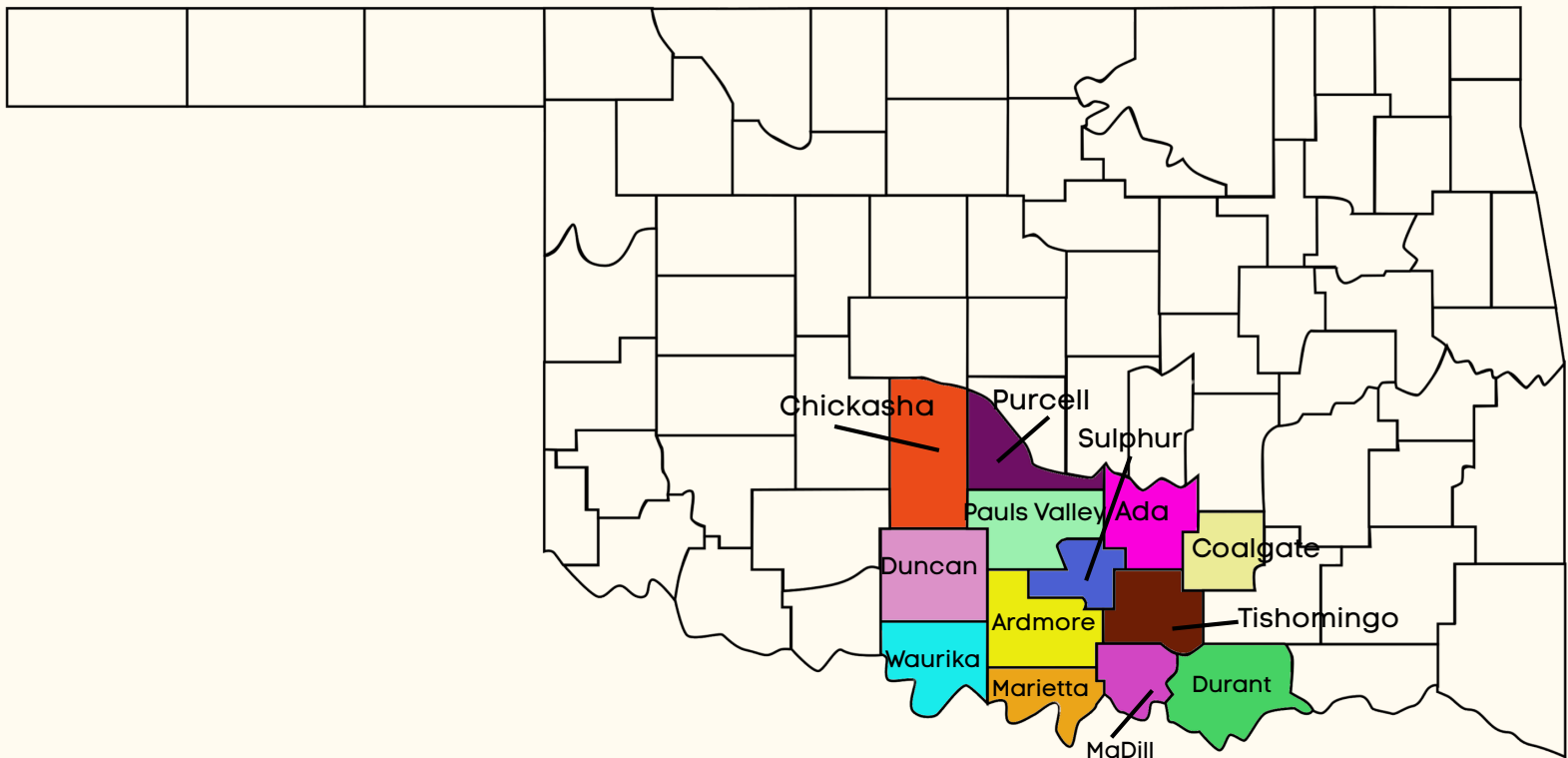
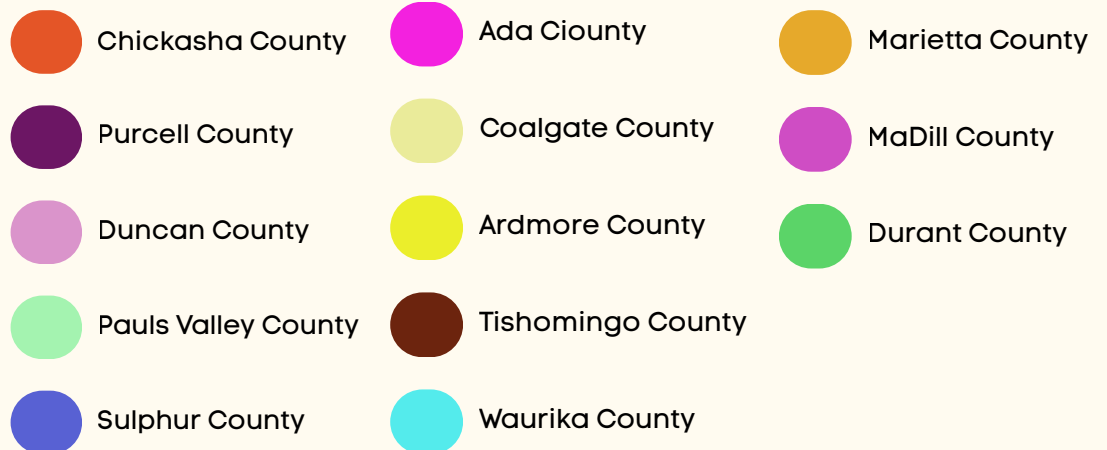


## FIREFLY PROGRAMS

### FIREFLY AUTISM COUNTIES SERVED IN OKLAHOMA THROUGH THE CHICKASAW NATION

13

Firefly currently serves  
individuals in 13 counties  
across Oklahoma.



# FIREFLY PROGRAMS

## **Center Based Programs**

Firefly Autism's Lakewood center provides individualized, center-based ABA services for learners ages 3 to 21 through Early Intervention, School-Age, and Vocational and Transition programming, while also serving as a gathering space for Adult Groups.

With gains across communication, social skills, behavior regulation, and adaptive and daily living skills, these outcomes reflect the dedication of Firefly's clinical teams and the strength-based, learner-centered approach that guides all center-based programming.

**100%**

of learners made progress  
in their individualized  
goals.



68 learners participated in  
center-based services in  
2025.

## **Transition Program**

Our young adult program includes the potential for participation in our transition program. Participants can expect daily outings and supported volunteering and workplace training, including customized on-site electronics recycling training, gardening experience, and more.

Thank you to our amazing community partners!





# FIREFLY PROGRAMS

## ***Telehealth and School-Based Services***

Through Outreach services, Firefly Autism expanded access to ABA intervention through telehealth and school-based support.

Telehealth and school-based services advance Firefly Autism's strategic priority of reducing access barriers by extending individualized, evidence-based support into homes, schools, and communities, ensuring learners and families receive consistent, empowering care regardless of location.

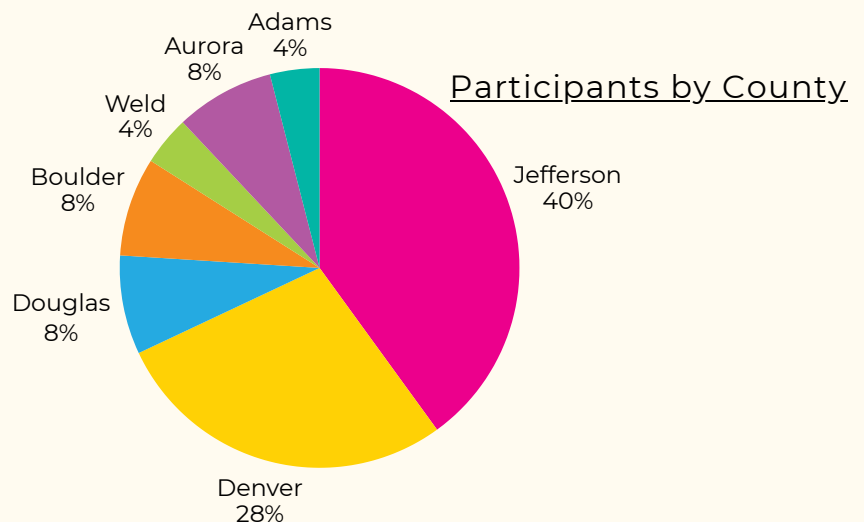
## ***Adult Programs***

**80%**

maintain employment  
while participating in the  
group.



The adult group currently  
has participants of all ages  
from 20 years to 76 years  
old.



## TRAINING & EDUCATION

### **Chickasaw Nation**

**241**

Individuals and families served through this partnership.



In 2025 Chickasaw Nation clients ages range from 5-28 years old with 14 being female and 49 being male.

Through our partnership with Chickasaw Nation, Firefly Autism provided expert training and tailored resources. In 2025, Firefly supported individuals and families through consultation, individualized programming, and specialty referrals, expanding access to personalized services within the Chickasaw Nation community.

Firefly's partnership with Chickasaw Nation advances the strategic priority of reducing access barriers by extending individualized expertise, training, and consultation into underserved communities beyond Firefly's physical campus.

**100%**

of participants reported increased confidence following Firefly Autism's Training & Education sessions.

**99%**

of participants reported that training content was applicable to their specific context.

**100%**

participating organizations reported increased capacity to support autistic individuals.

### Training and Education Participant Voice

"The course will not only help me manage anyone with a neurodiversity, but will help me as a general manager. The impact of this training is countless, changing the way we respond in situations and improving the services we provide."

"Great stuff. Thank you for providing insight into a world most of us don't know. Hopefully there are more opportunities to collaborate."



## TRAINING & EDUCATION

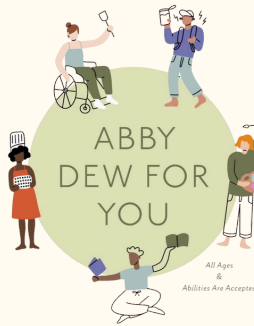
### Outreach Trainings Provided by Firefly

**306** Professionals, educators, and community members reached.

**3,000** Learners were directly impacted.

Firefly Autism delivered professional trainings and educational presentations to partners across Colorado, Oklahoma, and Minnesota, reaching 306 professionals, educators, and community members. Through these outreach efforts, more than 3,000 learners were directly or indirectly impacted through improved autism informed practices and strengthened community capacity to support individuals on the autism spectrum.

Training partners included St. Joseph's School, Chickasaw Nation, Momentum Behavior Services, the Colorado Department of Education, Castle Rock Police Department, Abby Dew for You, and Estes Park School District.



# FIREFLY PROGRAM SUCCESS STORIES

## Adult Program Success Story

A participant in the adult program has made remarkable progress in self-advocacy at her jobs with the Broncos and the Rockies. She now confidently communicates with supervisors and requests the accommodations she needs, such as access to a chair during her shifts. Her efforts and positive presence were recognized when the Rockies named her Rookie of the Year. She has become a well-known and well-loved part of the championship suites community, earning warm support from fans and staff alike.

## Outreach Learner Success Story

"When our child first began services, he struggled to express himself and often responded with "I don't know," rarely initiating conversation. Through thoughtful, strengths-based supports that honored how he communicates best, we watched his confidence grow. Now, his voice is clearer, more frequent, and full of connection, he independently starts conversations with our family, friends, and peers, something we once only hoped for."

## Center Based Learner Success Story

This year, one of our learners took on new work at the Action Center and truly shined. He confidently supported customers by loading carts, assisting them to their cars, and following directions from staff, all while independently greeting and closing interactions. When he shared that he is deaf and customers signed back to him, his joy was unmistakable, highlighting the power of inclusive, community-based opportunities.

## Firefly Parent Quotes

"The changes I have seen have been amazing. The staff support has been so incredible! Firefly has changed our lives for the better."

"We appreciate everyone at Firefly so much. Our child's quality of life has greatly improved. We are very impressed by our BCBA and the RBTs are all amazing."

"We loved our time with Firefly Autism. We learned so much about respectful, kind, and evidence based autism support services. Centering autonomy and self advocacy has resulted in a really happy, thriving child."





## SURVEY BASED IMPACT HIGHLIGHTS

Parent surveys demonstrate meaningful learner progress and increasing caregiver confidence across the year. Results reflect early gains followed by sustained progress as families built skills and stability.

### ***Current Learner Parent Impact***

Parents rated their child's behavior progress at an annual average of **7.6 out of 10**, reflecting improvements in emotional regulation, engagement, and daily transitions.

Parents reported an average academic progress score of **7.8 out of 10**, indicating meaningful gains in learning and skill development.

Parents reported an average confidence score of **8.4 out of 10** in applying strategies at home, while confidence in parent guidance from Firefly staff averaged **8.6 out of 10**. Collaboration with Firefly clinicians remained a key strength, earning an average rating of **9.1 out of 10**.

### ***Adult Groups Impact***

**100%** of Adult Group participants reported high enjoyment of the program. Participants described increased comfort in social settings, greater confidence interacting with peers, and opportunities to build friendships in a welcoming environment, with skills carrying over into daily life.

**100%** percent of parents of Adult Group participants reported positive changes in communication, social confidence, or ability to interact with others. Parents emphasized the value of Adult Groups as a consistent and inclusive social opportunity that supports belonging, confidence, and quality of life for adults on the autism spectrum.



## EARL LEE EVANS SENSORY AND COMMUNITY GARDEN

Firefly Autism's Earl Lee Evans Sensory and Community Garden is a therapeutic outdoor classroom used by learners in Firefly's center-based programs. During the growing season, the garden supports communication, regulation, and functional life skills through hands on activities such as planting, watering, and harvesting. The garden also served as the setting for Firefly's 2025 garden-based nutrition and feeding study.



### ***2025 Garden Based Nutrition Study***

Between May and October 2025, Firefly completed a formal study examining whether participation in garden-based activities increased learners' willingness to taste nutritious foods. Learners worked with Firefly staff in collaboration with a horticultural therapist from Denver Urban Gardens to grow and harvest food from the garden.

Through hands-on experiences in the garden, learners built greater comfort with nutritious foods, including those who are typically very selective eaters.

**92%**

of eligible learners were  
enrolled in the study.

**80%**

of participants tasted  
nutritious foods from  
the garden.

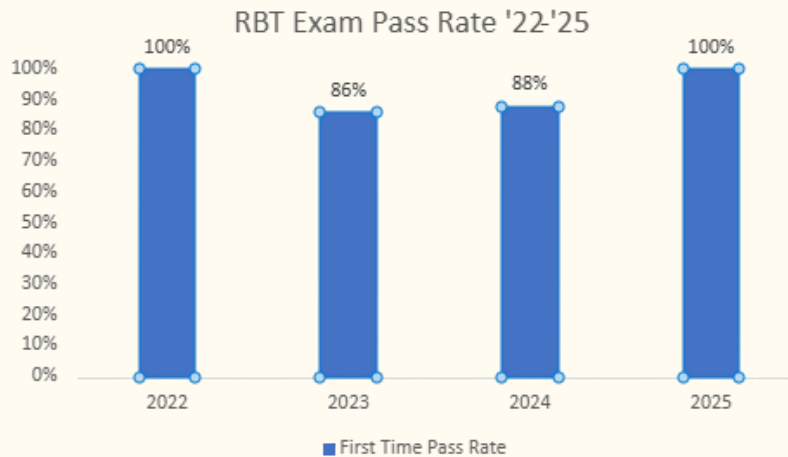
Learners with feeding goals and selective eating challenges successfully explored and tasted new foods.



# STAFF DEVELOPMENT

## STAFF DEVELOPMENT OPPORTUNITIES PROVIDED BY FIREFLY AUTISM

In 2025, Firefly Autism strengthened its workforce through internal training, recruitment, and professional development. Firefly operates its own Registered Behavior Technician training program that meets national certification requirements, with 12 individuals enrolling and 17 trainees passing the national RBT exam, resulting in a 100 percent pass rate.

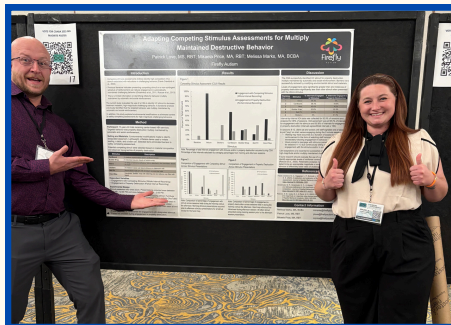


Firefly is proud to provide a comprehensive suite of staff training and certifications.

### 🌟 Firefly Shines at a State Conference! 🌟

In November, 30 Firefly team members attended the Colorado Association for Behavior Analysis annual conference, where we proudly showcased three research posters highlighting the meaningful and innovative work our staff delivers every day to advance the field of behavior analysis.

One poster earned first place in recognition of its exceptional quality and impact. A second Firefly poster received second place, further demonstrating the depth, rigor, and excellence of our team's work.



## COMMUNITY ENGAGEMENT & VOLUNTEERS

67

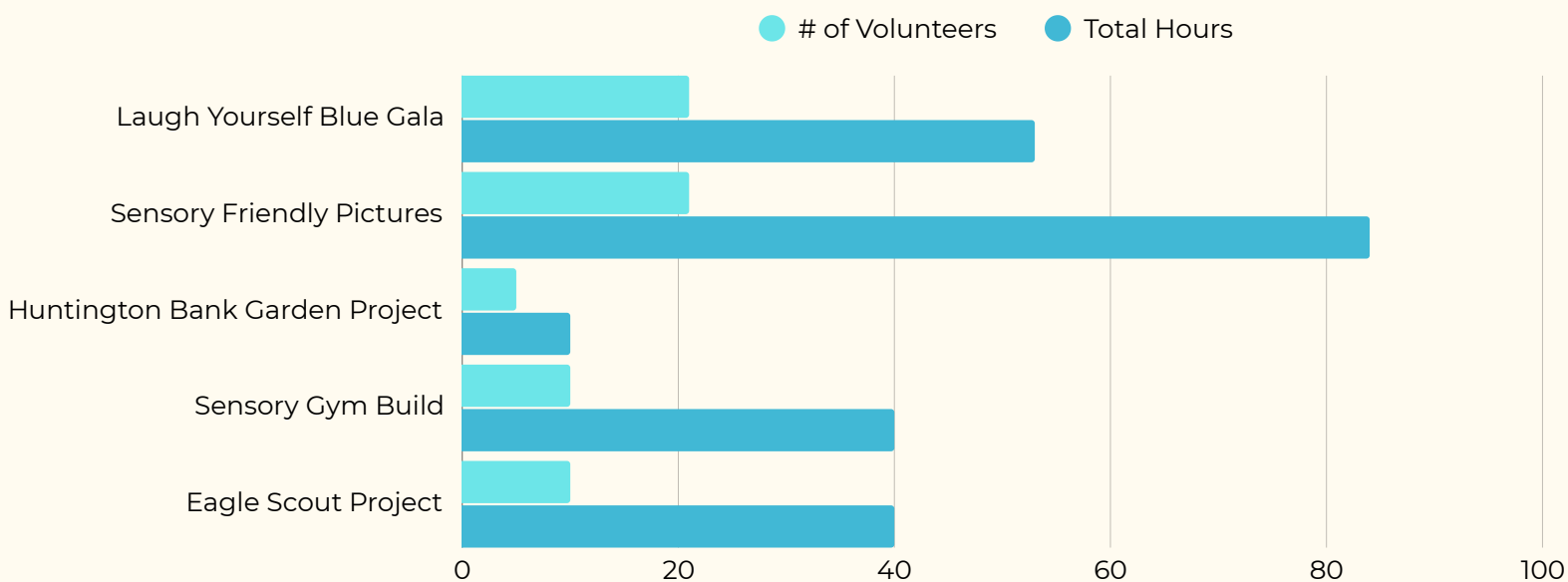
Volunteers supported Firefly in 2025.

Community engagement played an important role in advancing Firefly Autism's mission in 2025. 67 volunteers supported programs, events, and campus improvement projects across the organization.

Volunteer efforts strengthened key initiatives including the Laugh Yourself Blue Gala, Sensory Friendly Santa, Sensory Gym build out, Sensory Garden spring clean up led by Huntington Bank volunteers, and campus improvements completed by Eagle Scout volunteers, with additional support from Gratacon.

These contributions resulted in meaningful campus improvements, including new sensory gym equipment, classroom repairs and painting, and seasonal preparation of the Sensory and Community Garden. Volunteer support also generated cost savings, allowing more resources to be directed toward learner services.

*This work aligns with Firefly Autism's strategic plan by strengthening community partnerships and expanding organizational capacity to deliver inclusive, high-quality services.*



## COLORADO GIVES DAY

Firefly raised \$46,584 during our Colorado Gives Day campaign to enhance existing sensory friendly classrooms with thoughtful upgrades that support calm, comfort, and connection. The upgraded classrooms continue to provide supportive environments where learners of all ages can feel safe, engaged, and empowered to grow and shine.

## COMMUNITY RECOGNITIONS

Firefly is proud to be recognized by multiple community organizations for our leadership and the meaningful impact of our work.



**National Philanthropy Day®**

Firefly was an award recipient for the 2025 National Philanthropy Day in Colorado in the Inspiration category!



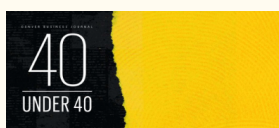
Firefly was the charitable partner for the Colorado Broadcasters Association Hall of Fame Night. A night dedicated to celebrating legends who give voice to our communities



Firefly received the 2025 Denver Business Journal Partner in Philanthropy Award for advancing community impact through partnerships, giving, and volunteerism.



Firefly Autism was honored to be recognized as the beneficiary of Hall Financial's 2025 Client Appreciation Gala for our work supporting autistic individuals and their families across Colorado.



Dr. Amanda Kelly, Firefly's President & CEO was named one of Denver Business Journal's 40 Under 40.





## FIREFLY AUTISM EVENTS

Firefly events bring families, professionals, and community partners together to build connection, share knowledge, and expand access to autism-affirming support.

### **Firefly Autism 2025 Laugh Yourself Blue Gala**

Firefly Autism hosted its 14th annual Laugh Yourself Blue gala at the Denver Center for the Performing Arts in May 2025, raising \$784,409 to support individuals and families impacted by autism. With 516 attendees and 38 sponsors, this signature event continued to celebrate community, awareness, and the joy of laughter while strengthening support for individuals on the autism spectrum.



### **3rd Annual Lifetime Classic**

Lifetime Home Remodeling proudly hosted the third annual Lifetime Golf Tournament at the Colorado Golf Club in July 2025, raising \$162,373.80 to benefit Firefly Autism. With 80 golfers and 26 generous sponsors, this beautiful day on the course brought our community together in support of Firefly's mission. Participants enjoyed great weather, connection, and purpose as they helped create lasting impact for the individuals and families Firefly serves.



## FIREFLY AUTISM EVENTS

### **Firefly Autism 3rd Annual Summer Garden Party**

The 3rd Annual Summer Garden Party was held in September 2025 at the Earl Lee Evans Sensory and Community Garden, bringing together donors, partners, and community members for an evening of celebration and connection. Guests enjoyed live music, food, yard games, and artwork by members of Firefly's Adult Groups in the vibrant garden setting. Firefly staff also shared updates on garden-based research, highlighting the space's role as both a community gathering place and an extension of Firefly's programs.



### **4th Annual Sensory Friendly Holiday Pictures**

Firefly Autism's Sensory Friendly Pictures provides families with the opportunity to enjoy holiday photos in a sensory-friendly, supportive environment where every individual was welcomed, respected, and celebrated.





## FACILITY & CAPITAL IMPROVEMENTS

### **Sensory Therapy Gym**

This year, Firefly Autism opened a new sensory therapy gym to support regulation, movement, and engagement for learners across programs. Equipped with adaptive sensory tools, the gym has already improved readiness for learning, confidence in movement, and overall engagement. Made possible through the generosity of the Morgridge Family Foundation, Summit Sensory, and supporters of our 2024 Colorado Gives Day campaign, this space reflects Firefly's commitment to creating safe, empowering environments for individuals on the autism spectrum.

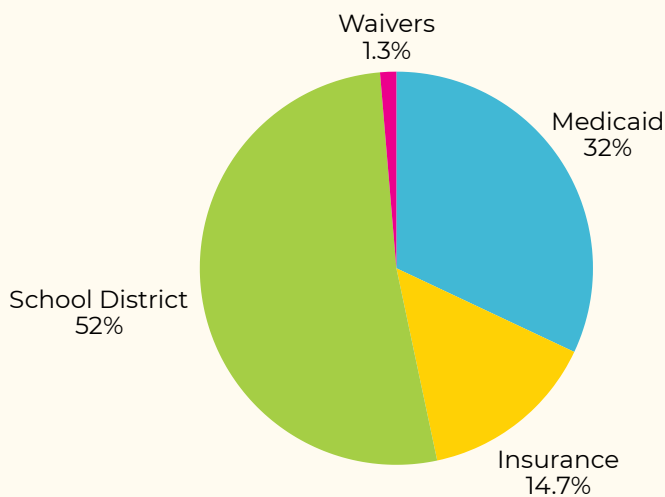
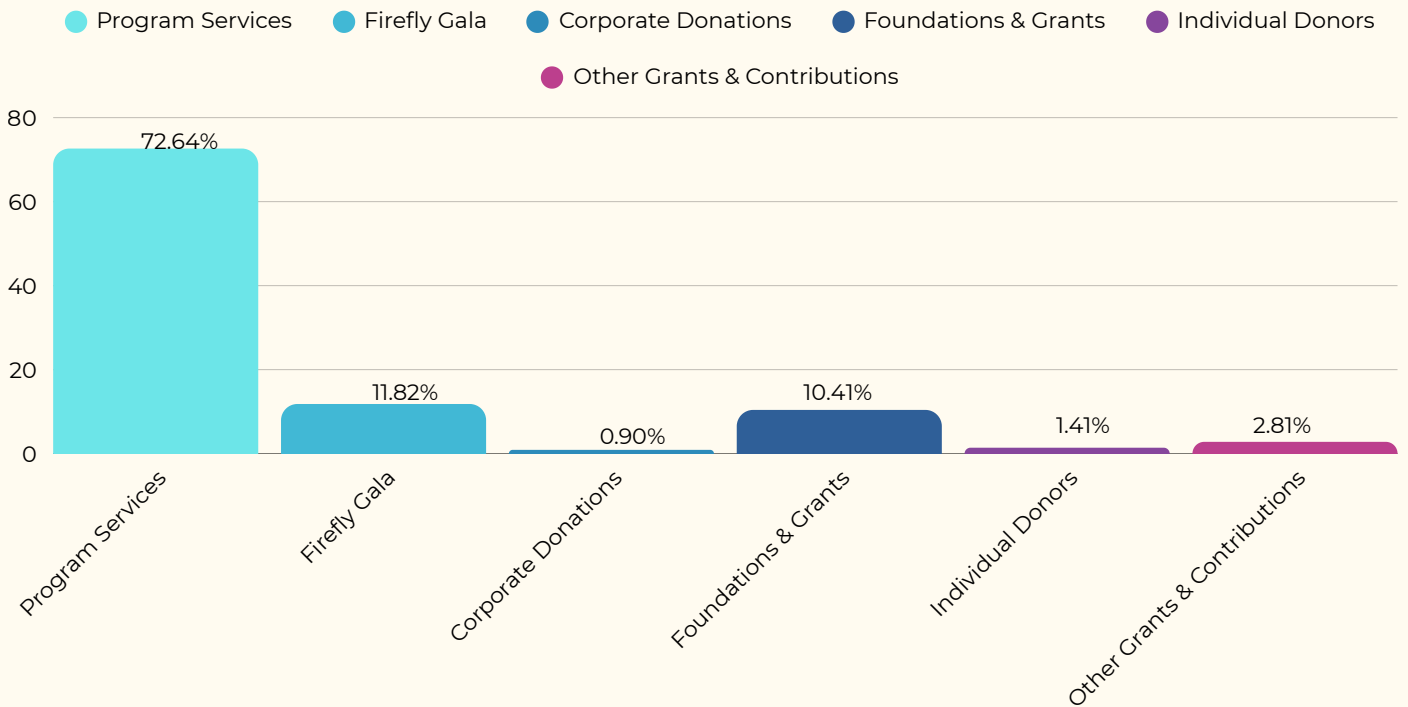


### **Path to Success | Community Sensory Garden**

This year marked an important milestone for the Community Sensory Garden with the installation of the first section of the Path to Success, a brick walkway honoring the individuals, families, and partners who support Firefly Autism. Made possible by generous donors, the completed path improves accessibility to the garden while symbolizing a shared commitment to helping learners grow, thrive, and connect through outdoor learning and therapeutic experiences.



# FINANCIAL DATA

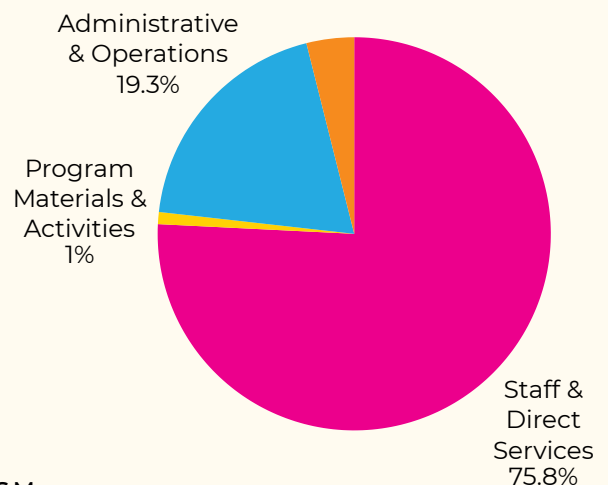


## Funding Sources for individuals:

Medicaid = 32%  
Insurance = 14.67%  
School District = 52%  
Waivers = 1.33%

## Organizational Spending:

Staff & Direct Services = 76.43%  
Program Materials & Activities = 0.15%  
Administrative & Operations = 19.47%  
Fundraising & Community Engagement = 3.95%





## FIREFLY AUTISM BOARD OF DIRECTORS



**BOARD CHAIR**  
Linda Childears



**BOARD VICE CHAIR**  
Janette Ferguson



**BOARD TREASURER**  
Ed Francis



**BOARD SECRETARY**  
Jessen Perko



**PAST BOARD CHAIR**  
Sandra Gudat



Donna Goldin Evans



Greg McCarthy



Jason Audette



Javier Soto



Jesse Ogas



John Griffith



Kate Delzell







## FIREFLY AUTISM BOARD OF DIRECTORS



**Krystal Than**



**Laura Rizzo**



**Leigh Sullivan**



**Liz Austin**



**Mark Richtermeyer**



**Matt Teeters**



**Megan Beebe**



**Morgan Wuthrich**



**Randy Perko**



**Saurabh Gupta**



**Scott Friedman**



**Travis Plakke**





## Thank you to our title sponsors!

These individuals donated \$50,000 or more to Firefly Autism in 2025.





## Thank you to our sponsors and donors!

9News/TEGNA  
Aaron Inman  
Aaron LaPedis  
ABC Supply  
Adrienne Bush  
Aja Naro  
Albert Lago Jr  
Alejandra Harvey  
Alex Weishaar  
Allan Matsuo  
Allison Bourquin  
All-Out Multicourse Productions  
Alpine Bank  
Amazon  
Ambar Suero  
Amy Bittner  
Amy Dickerson  
Amy Schmitz  
Andrea Ryan  
Andres Carrera  
Andrew Matthews  
Angela Davidson  
Angela Hutton-Hall  
Angela King  
Angels of Care  
Anlin Windows and Doors  
Anna Stout  
Ashley Behrens  
Ashley Fangman  
Ashley McClure  
Ashley Stephens  
Associated Materials  
Augusto Valdez  
Auna Jornayvaz  
Bank of America Charitable Gift Fund  
Barbara Grogan  
Behr Benefits LLC  
Bernstein Private Wealth Management  
Bill & Cheryl Rooney  
Bill & Janie Ernstrom  
Bill Kitamura  
Bill Mason  
Bill Plummer  
Billy Leggett  
Blake Bradley  
Bo Peretto  
Bob Greene  
Bob Loeb

BOK Financial  
Bradbury Family Partnership  
Brandon Bilewski  
Brandon Russell  
Brenda Bluestone Austin  
Brett Kuhn  
Brian McDermott  
Brightfin  
Brit Pimentel  
Brown & Brown, Inc  
Bruce McLennan  
Bryan Brewer  
Bryce Lopez  
Byron Stuart  
Carol Baldwin  
Caroline Vaszauskas  
Carolyn Fineran  
Catharina Hughey  
Cathi's Table  
CBS Colorado  
CentralReach  
Charles Rhoades  
Cheryl Ardrey  
Chris Male  
Chris Mast  
Christina Cline  
Christine Dutko  
Christine Griffin  
Christine Hammond  
Christopher Drake  
Christopher Holley  
CIGNA  
Clay Condon  
Clifford Marks  
CoBank  
Colorado Behavioral Health Administration  
Colorado Gives Foundation  
Colorado Rockies Baseball Club  
Connor Hall  
Cora Sexton Wheeler  
Coree Schmitz  
Craig & Meeri Baldwin  
Cuvee  
Cynthia Weist  
D.J Whetter  
Dan & Julie Dobler

Dana Aragon  
Dana Lyall  
Daniel Filbert  
Daniel Frenchmore  
Daniels Fund  
Darrell Olson  
Dave & Nicole Hayes  
David & Sylvia Young  
David Barnett  
David Edwards  
David Perry  
David Sevick  
Dean Norris  
Deb Howitt  
Debbie Matthews  
Deborah Brackney  
Dennis Dauper  
Denver International Airport  
Derek O'Neill  
Developmental Pathways  
Diane Heller  
Dick & Jeanne Saunders  
Dominic & Carol Capuano  
Don & Linda Childears  
Donn Livingston  
Donna Goldin-Evans  
Dormie Network LLC  
Douglas Campbell  
Dunkin Family Fund  
Dustin Whitmore  
Earl & Nancy Wright  
Ed Schenkein  
Edward Francis  
El Pomar Foundation  
Elaine Appel  
Emily Henderson  
Emily Mazzeo  
Emily Spencer  
Emma Keever  
Ent Credit Union  
Eric Spencer  
Evan Baklid  
Evan Sisneros  
Farmer's Insurance - Eric Davis Agency  
Faye Tate  
Fidelity





## Thank you to our sponsors and donors!

FirstBank Holding Company  
Frontera Health  
Fruition  
Gaddi Layden  
GAF  
Gary Moore  
Gerald & Desiree Ingram  
Greg McCarthy  
Gregg Scott  
GSM Partners Inc.  
Guide Real Estate  
Hadley Woodruff  
Han-Hsien Tuan  
Heather McCoy  
Huntington National Bank  
Husch Blackwell LLP  
Ika Wilcox  
InBank  
Infinity by Marvin  
Ingrid Hilbink  
Intermountain Health  
Isaac Schilling  
Ismael Acosta  
Jada Fields  
Jaime Hohl  
James Hardie  
James Reid  
Jamie Doucette  
Jane Rosenbaum  
Janet Albert  
Janette Ferguson  
Jan-Pro Cleaning  
Jason Audette  
Jason Buniger  
Jason Holley  
Jason Martinez  
Jason Pavia  
Jason Ryan  
Jason Shorter  
Javier Soto  
Jayme Halbe  
Jean May  
Jeff Gray  
Jeffrey Reser  
Jennifer Nolte  
Jeremy Ryan  
Jesse Ogas

Jessen Gregory  
Jessica Diaz  
Jessica Hobbs  
Jessica Ostoyich  
Jessie Kramer  
Jill Wright  
Joan C Leprino Fund  
Joan Mast-Loughridge  
Joanne Davidson  
Jody McNerney  
Jody Myers  
Jody Sandoval  
Joe Palladino  
Joe Wise  
Joel Stanley  
John & Christine Smith  
John & Susan Denny  
John Drafts  
John Eggert  
John Farnam  
John Griffith  
John K Byerlein Jr  
John Paranto  
Jon Phillips  
Joseph Berg  
Josh & Alexis Clendenin  
Josh Pritchard  
Joshua Birdsall  
June Travis  
Justin & Cambria Docherty  
Justin Gutierrez  
Kaiser Permanente  
Karen Schauble  
Karla Burman  
Kasia Iwancizko-MacLeod  
Kate Maples  
Katharine Modisett  
Katherine VanderWoude  
Kati Zuromski  
Katie Keating  
Kaylee Hart  
Kelly Waltrip  
Ken Wasmundt  
Kenneth & Hope Hernandez - Salazar  
Kevin & Tammy Miller  
Kimberley Pretzer  
Kohler

Kristin Powell  
Kroger  
Krystal Than  
Kudla Family Charitable Foundation  
Lance Olson  
Lang Sais  
Lara Fahnestock  
Larry King  
Laura Kathman  
Lawrence Weiner  
Len Lyall Chevrolet  
Leslie Hancock  
Li Lutes  
Liberty Mutual  
Lifetime Home Remodeling  
Lifetime Roof & Solar  
Lin Neff  
Linda Appel Lipsius  
Linda Kicak  
Lisa Bobak  
Lisset Ocon  
Lockheed Martin  
Lori Collier  
Lynn Nease  
Lynn Skinner  
Mackenzie Paranto  
Madison Rhodes  
Margot Gilbert  
Maritza Gomez  
Mark & Elizabeth Austin  
Mark Keller  
Mark Reister  
Mark Richtermeyer  
Marnie Crowe  
Mary Hanewall  
Mary Kay Lofgren  
Matt Rosenbaum  
Matt Teeters  
Matt Woltz  
Matthew & JoAnn Muller  
Matthew Stratton  
Maureen Hearty  
Meghan Klassen  
Michael & Teresa Leede Family Fund  
Michael Edwards  
Michael Fordyce  
Michael Lang







## Thank you to our sponsors and donors!

Michael McNeill  
Michael Stewart  
Mike Behrendsen  
Mike Pirrami  
Mike Treiser  
Minda Winger  
Molly Grasso  
Morgan Wuthrich  
Moumita Das  
Naomi Tucker  
Natalia Gradovich  
National Western Stock Show  
Neil Fitzgerald  
Neil Kalmes  
NexusTek  
NFP  
Nicholas Earhart  
Nicholas Perez  
Nicholas Wininger  
Nicole Jones  
Norm Franke  
Ortho House Family Orthodontics  
Patricia Estes  
Patty Murray  
Perfect Game Colorado  
Philip Weathers  
Pinnacle Stone Works  
Priscilla Scadden  
R.D. Sewald  
Rae Tafoya  
Ramos Law  
Randall & Kori White  
Randy Sachter  
Ravi Shah  
Rebecca Nalli  
Rhonda Sparlin  
Rich Fresquez  
Richard Daskam  
Richard Farley  
Richard Flores  
Rike Palese  
Rita Wilcox  
RK Foundation  
Rob Bingham  
Robert & Sami Hazan  
Robert Greene  
Robin Vint

Ron & Lisa Ramirez  
Ron & Paula Bonneau  
RubinBrown LLP  
Ruddy Gregory PLLC  
Ryan & Amy O'Brien  
Ryan & Lindsey Skeuse  
Ryan Caplan  
Sadye Hazan  
Sam Reiser  
Sandra Gudat  
Santiago & Megan Escobedo  
Sapan Shah  
Saurabh Gupta  
Savannah Wippel  
Scott & Sarah Burg  
Scott Colvin  
Scott Friedman  
Scott Hockensmith  
Scott Miller  
Sean & Kate Delzell  
Sean Hughes  
Sean Raftery  
Sharon Vincent  
Shea Ross  
Shell Foundation  
Shelly Roney  
Sheryl Barecki  
Sprouts Healthy Communities Foundation  
Stephen & Camille Weber  
Stephen Chismarich  
Stephen Stein  
Steve Chase  
Steven Kris  
Suzanne Murphy  
Tammy Reid  
Team Dave Logan  
Terri Mayfield  
Terry Lantz  
The Colorado Health Foundation  
The Denver Foundation  
The Keep Driving Foundation  
The Melvin and Elaine Wolf Foundation  
The Morgridge Family Foundation  
The Sofia Isabel Soto Fund  
The Sullivan Group  
The Virginia W. Hill Foundation  
Thomas Goldsmith

Thomas King  
Tierney Aldridge  
Tim & Elizabeth Ulfing  
Timothy McEntee  
Timothy Neil  
Tina Nguyen  
Todd & Diane Raba  
Todd Lukasik  
Todd Nelson  
Tom Barr  
Tonia Ryan  
Tracy Family Foundation  
Travis Plakke & Leigh Sullivan  
Tree King  
Tyler & Megan Sparks  
United Way  
Vanecia Kerr  
Vince Aragon  
Virginia Douglass  
Walker Monfort  
Walmart  
Wilfred Miles  
William Perry  
Williams Revocable Trust  
Williams Weese Pepple & Ferguson PC  
Woodruff-Sawyer Inc.  
Working Warriors Group  
Xan Pearson  
Yolanda Ortega  
Zach Gonzales  
Zachary Bazer  
Zack Sanders



## GIVE TO FIREFLY AUTISM



# Giving Board



Hands on Learning	Staff & Community Education	Family Support	Building Maintenance
<b>\$250</b> Kits for planting & growing produce in our sensory garden.	<b>\$250</b> Community trainings for community groups like first responders.	<b>\$250</b> Social emotional training for one family.	<b>\$250</b> Sensory supplies (headphones, sensory toys, etc) for our learners.
<b>\$500</b> Annual maintenance in our sensory garden.	<b>\$500</b> Community Education & Engagement session at Firefly Autism.	<b>\$500</b> 4-hour behavioral skills assessment for one learner.	<b>\$500</b> Playground equipment, repairs, and maintenance.
<b>\$1,000</b> Transition to Work Program's community outings.	<b>\$1,000</b> Trauma care training for 4 Firefly staff members.	<b>\$1,000</b> 30 hours of medical care for Firefly's medically fragile learners.	<b>\$1,000</b> One year of maintenance in the Blue Star Recycling Computer Room.
<b>\$2,500</b> Adult Groups outings for one month.	<b>\$2,500</b> Training for Firefly's Neurodiversity Certification for staff members.	<b>\$2,500</b> 1 month of behavior support services for a family.	<b>\$2,500</b> Cost of building repairs and maintenance.



## GIVE TO FIREFLY AUTISM

### **The Sofia Isabel Soto Fund**

The Sofia Isabel Fund for Firefly Autism is in memory of Sofia Isabel Soto, daughter of Javier Alberto Soto, The Denver Foundation's President and CEO. While in Colorado, Sofia received services from Firefly Autism, including abundant support and love. Gifts to this fund will help Firefly Autism support children like Sofia.

**Donate to the Sofia Isabel Soto fund**

### **Planned Giving**

Whether you are planning for the future, or seeking meaningful ways to give today, legacy gift planning can create life-changing opportunities for the children, teens, and adults we serve at Firefly Autism. This is a powerful way to fulfill your philanthropic goals, enjoy significant tax benefits, and further Firefly's mission while supporting your financial well-being.

**Learn More About Planned Giving**

### **Path to Success**

Personalize your very own brick and leave a lasting legacy in the Earl Lee Evans Sensory & Community Garden! Your personalized brick will permanently honor someone special while helping fund Firefly Autism's vital programs. Each purchase directly supports our mission to serve individuals on the autism spectrum.

**Purchase Your Brick Now**

### **Amazon Wishlist**

Help us make a difference by donating much-needed supplies to our center! Our Amazon Wishlist features items that directly support our programs and students, ensuring they have the tools they need to thrive. Whether it's sensory toys, educational materials, or everyday essentials, every contribution counts.

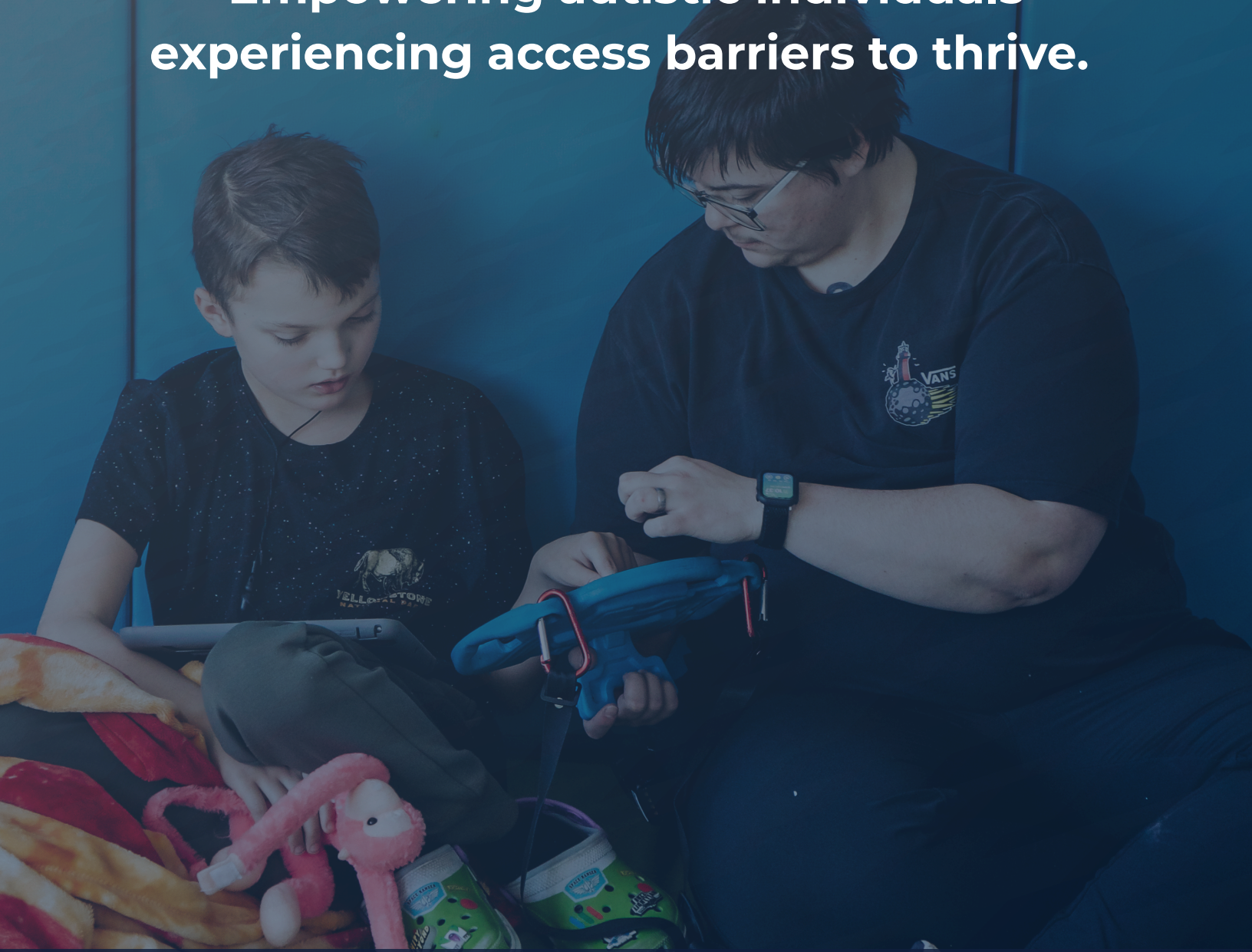
**Amazon Wishlist**





# Firefly Autism

Empowering autistic individuals  
experiencing access barriers to thrive.



**Get in touch with us!**

2001 Hoyt St. Lakewood, CO 80215

303-759-1192

[fireflyautism.org](http://fireflyautism.org)